

AP0408

Leader in Biomolecular Solutions for Life Science



Phospho-MET-Y1234/Y1235 Rabbit pAb

Catalog No.: AP0408

Basic Information

Observed MW

156kDa

Calculated MW

156kDa

Category

Polyclonal Antibody

Applications

WB

Cross-Reactivity

Human, Mouse, Rat

Background

This gene encodes a member of the receptor tyrosine kinase family of proteins and the product of the proto-oncogene MET. The encoded preproprotein is proteolytically processed to generate alpha and beta subunits that are linked via disulfide bonds to form the mature receptor. Further processing of the beta subunit results in the formation of the M10 peptide, which has been shown to reduce lung fibrosis. Binding of its ligand, hepatocyte growth factor, induces dimerization and activation of the receptor, which plays a role in cellular survival, embryogenesis, and cellular migration and invasion. Mutations in this gene are associated with papillary renal cell carcinoma, hepatocellular carcinoma, and various head and neck cancers. Amplification and overexpression of this gene are also associated with multiple human cancers.

Recommended Dilutions

WB 1:500 - 1:2000

Immunogen Information

Gene ID

4233

Swiss Prot

P08581

Immunogen

A phospho specific peptide corresponding to residues surrounding Y1234/Y1235 of human MET

Synonyms

DA11; HGFR; AUTS9; RCCP2; c-Met; DFN97; Phospho-MET-Y1234/Y1235

Contact



www.abclonal.com

Product Information

Source

Rabbit

Isotype

IgG

Purification

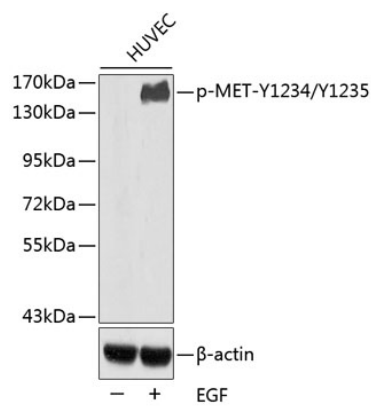
Affinity purification

Storage

Store at -20°C. Avoid freeze / thaw cycles.

Buffer: PBS with 0.02% sodium azide, 50% glycerol, pH 7.3.

Validation Data



Western blot analysis of extracts from HUVEC cells, using Phospho-MET-Y1234/Y1235 antibody (AP0408).
Secondary antibody: HRP Goat Anti-Rabbit IgG (H+L) (AS014) at 1:10000 dilution.
Lysates/proteins: 25µg per lane.
Blocking buffer: 3% BSA.