

AP0387

Leader in Biomolecular Solutions for Life Science



Phospho-LIMK1-T508 Rabbit pAb

Catalog No.: AP0387

1 Publications

Basic Information

Observed MW

73kDa

Calculated MW

73kDa

Category

Mouse Monoclonal Antibody

Applications

WB, IHC-P, IF/ICC, ELISA

Cross-Reactivity

Human, Mouse, Rat

Background

There are approximately 40 known eukaryotic LIM proteins, so named for the LIM domains they contain. LIM domains are highly conserved cysteine-rich structures containing 2 zinc fingers. Although zinc fingers usually function by binding to DNA or RNA, the LIM motif probably mediates protein-protein interactions. LIM kinase-1 and LIM kinase-2 belong to a small subfamily with a unique combination of 2 N-terminal LIM motifs and a C-terminal protein kinase domain. LIMK1 is a serine/threonine kinase that regulates actin polymerization via phosphorylation and inactivation of the actin binding factor cofilin. This protein is ubiquitously expressed during development and plays a role in many cellular processes associated with cytoskeletal structure. This protein also stimulates axon growth and may play a role in brain development. LIMK1 hemizyosity is implicated in the impaired visuospatial constructive cognition of Williams syndrome. Alternative splicing results in multiple transcript variants encoding distinct isoforms.

Recommended Dilutions

WB	1:500 - 1:2000
IHC-P	1:50 - 1:100
IF/ICC	1:100 - 1:200

Immunogen Information

Gene ID

3984

Swiss Prot

P53667

Immunogen

A synthetic phosphorylated peptide around T508 of human LIMK1LIMK1 (NP_002305.1).

Synonyms

LIMK; LIMK-1; Phospho-LIMK1-T508

Contact



www.abclonal.com

Product Information

Source

Rabbit

Isotype

IgG

Purification

Affinity purification

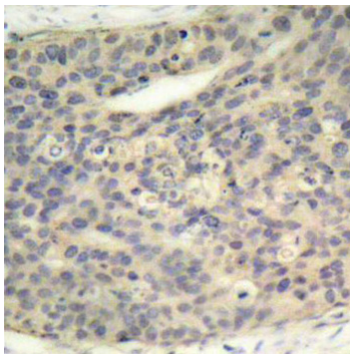
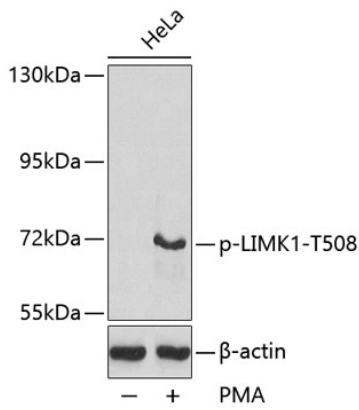
Storage

Store at -20°C. Avoid freeze / thaw cycles.

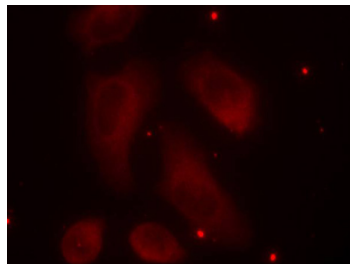
Buffer: PBS with 0.01% thimerosal, 50% glycerol, pH7.3.

Validation Data

Western blot analysis of lysates from HeLa cells, using Phospho-LIMK1-T508 Rabbit pAb (AP0387).



Immunohistochemistry analysis of Phospho-LIMK1-T508 in paraffin-embedded human breast carcinoma using Phospho-LIMK1-T508 Rabbit pAb (AP0387). Perform microwave antigen retrieval with 10 mM Tris/EDTA buffer pH 9.0 before commencing with IHC staining protocol.



Immunofluorescence analysis of methanol-fixed HeLa cells using Phospho-LIMK1-T508 Rabbit pAb (AP0387).