

AP0368

Leader in Biomolecular Solutions for Life Science



Phospho-IGF1R-Y1280 Rabbit pAb

Catalog No.: AP0368

Basic Information

Observed MW

95kDa

Calculated MW

155kDa

Category

Polyclonal Antibody

Applications

WB

Cross-Reactivity

Human

Background

This receptor binds insulin-like growth factor with a high affinity. It has tyrosine kinase activity. The insulin-like growth factor I receptor plays a critical role in transformation events. Cleavage of the precursor generates alpha and beta subunits. It is highly overexpressed in most malignant tissues where it functions as an anti-apoptotic agent by enhancing cell survival. Alternatively spliced transcript variants encoding distinct isoforms have been found for this gene.

Recommended Dilutions

WB 1:500 - 1:2000

Immunogen Information

Gene ID

3480

Swiss Prot

P08069

Immunogen

A phospho specific peptide corresponding to residues surrounding Y1280 of human IGF1R

Synonyms

IGFR; CD221; IGFR; JTK13; Phospho-IGF1R-Y1280

Contact



www.abclonal.com

Product Information

Source

Rabbit

Isotype

IgG

Purification

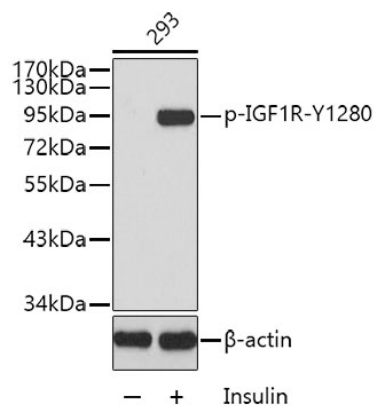
Affinity purification

Storage

Store at -20°C. Avoid freeze / thaw cycles.

Buffer: PBS with 0.02% sodium azide, 50% glycerol, pH 7.3.

Validation Data



Western blot analysis of lysates from 293 cells, using Phospho-IGF1R-Y1280 Rabbit pAb (AP0368).
Secondary antibody: HRP Goat Anti-Rabbit IgG (H+L) (AS014) at 1:10000 dilution.
Lysates/proteins: 25µg per lane.
Blocking buffer: 3% BSA.