

AP0250

Leader in Biomolecular Solutions for Life Science



## Phospho-DOK2-Y299 Rabbit pAb

Catalog No.: AP0250

### Basic Information

**Observed MW**

55kDa

**Calculated MW**

45kDa

**Category**

Polyclonal Antibody

**Applications**

WB,IF/ICC

**Cross-Reactivity**

Human

### Background

The protein encoded by this gene is constitutively tyrosine phosphorylated in hematopoietic progenitors isolated from chronic myelogenous leukemia (CML) patients in the chronic phase. It may be a critical substrate for p210(bcr/abl), a chimeric protein whose presence is associated with CML. This encoded protein binds p120 (RasGAP) from CML cells.

### Recommended Dilutions

<b>WB</b>	1:500 - 1:2000
<b>IF/ICC</b>	1:100 - 1:200

### Immunogen Information

**Gene ID**

9046

**Swiss Prot**

O60496

**Immunogen**

A phospho specific peptide corresponding to residues surrounding Y299 of human DOK2

**Synonyms**

p56DOK; p56dok-2; Phospho-DOK2-Y299

### Contact



[www.abclonal.com](http://www.abclonal.com)

### Product Information

**Source**

Rabbit

**Isotype**

IgG

**Purification**

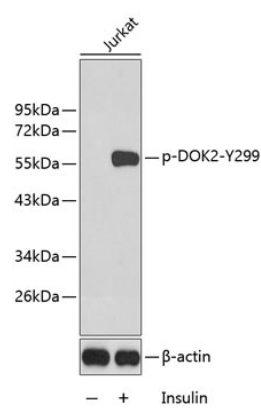
Affinity purification

**Storage**

Store at -20°C. Avoid freeze / thaw cycles.

Buffer: PBS with 0.02% sodium azide,50% glycerol,pH7.3.

# Validation Data



Western blot analysis of lysates from Jurkat cells using Phospho-DOK2-Y299 Rabbit pAb (AP0250).  
Secondary antibody: HRP Goat Anti-Rabbit IgG (H+L) (AS014) at 1:10000 dilution.  
Lysates/proteins: 25µg per lane.  
Blocking buffer: 3% BSA.