

AP0189

Leader in Biomolecular Solutions for Life Science



Phospho-HSP27/HSPB1-S15 Rabbit pAb

Catalog No.: AP0189

Basic Information

Observed MW

26kDa

Calculated MW

23kDa

Category

Polyclonal Antibody

Applications

WB, IF/ICC

Cross-Reactivity

Human

Background

This gene encodes a member of the small heat shock protein (HSP20) family of proteins. In response to environmental stress, the encoded protein translocates from the cytoplasm to the nucleus and functions as a molecular chaperone that promotes the correct folding of other proteins. This protein plays an important role in the differentiation of a wide variety of cell types. Expression of this gene is correlated with poor clinical outcome in multiple human cancers, and the encoded protein may promote cancer cell proliferation and metastasis, while protecting cancer cells from apoptosis. Mutations in this gene have been identified in human patients with Charcot-Marie-Tooth disease and distal hereditary motor neuropathy.

Recommended Dilutions

WB	1:500 - 1:2000
IF/ICC	1:100 - 1:200

Immunogen Information

Gene ID

3315

Swiss Prot

P04792

Immunogen

A phospho specific peptide corresponding to residues surrounding S15 of human HSP27/HSPB1

Synonyms

CMT2F; HMN2B; HSP27; HSP28; Hsp25; SRP27; HS.76067; HEL-S-102; Phospho-HSP27/HSPB1-S15

Contact



www.abclonal.com

Product Information

Source

Rabbit

Isotype

IgG

Purification

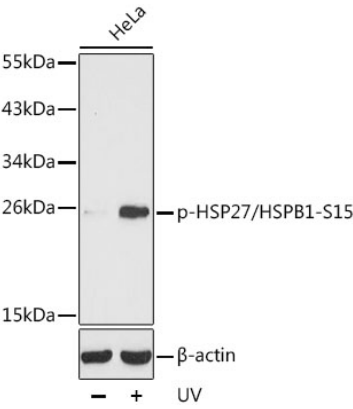
Affinity purification

Storage

Store at -20°C. Avoid freeze / thaw cycles.

Buffer: PBS with 0.02% sodium azide, 50% glycerol, pH 7.3.

Validation Data



Western blot analysis of extracts from HeLa cells, using Phospho-HSP27/HSPB1-S15 antibody (AP0189).
Secondary antibody: HRP Goat Anti-Rabbit IgG (H+L) (AS014) at 1:10000 dilution.
Lysates/proteins: 25µg per lane.
Blocking buffer: 3% BSA.