

AP0187

Leader in Biomolecular Solutions for Life Science



Phospho-VASP-S239 Rabbit pAb

Catalog No.: AP0187

Basic Information

Observed MW

50kDa

Calculated MW

40kDa

Category

Polyclonal Antibody

Applications

WB, IHC-P, ELISA

Cross-Reactivity

Human, Mouse, Rat

Background

Vasodilator-stimulated phosphoprotein (VASP) is a member of the Ena-VASP protein family. Ena-VASP family members contain an EHV1 N-terminal domain that binds proteins containing E/DFPPPPXD/E motifs and targets Ena-VASP proteins to focal adhesions. In the mid-region of the protein, family members have a proline-rich domain that binds SH3 and WW domain-containing proteins. Their C-terminal EVH2 domain mediates tetramerization and binds both G and F actin. VASP is associated with filamentous actin formation and likely plays a widespread role in cell adhesion and motility. VASP may also be involved in the intracellular signaling pathways that regulate integrin-extracellular matrix interactions. VASP is regulated by the cyclic nucleotide-dependent kinases PKA and PKG.

Recommended Dilutions

WB 1:500 - 1:1000

IHC-P 1:50 - 1:200

Immunogen Information

Gene ID

7408

Swiss Prot

P50552

Immunogen

A synthetic phosphorylated peptide around S239 of human VASP (NP_003361.1).

Synonyms

VASP; Phospho-VASP-S239

Contact



www.abclonal.com

Product Information

Source

Rabbit

Isotype

IgG

Purification

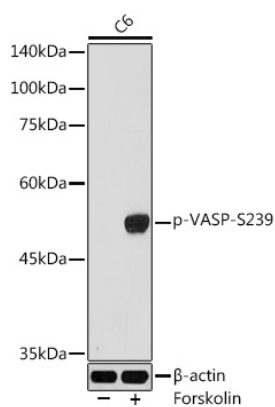
Affinity purification

Storage

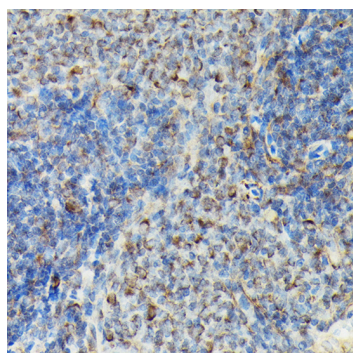
Store at -20°C. Avoid freeze / thaw cycles.

Buffer: PBS with 0.01% thimerosal, 50% glycerol, pH 7.3.

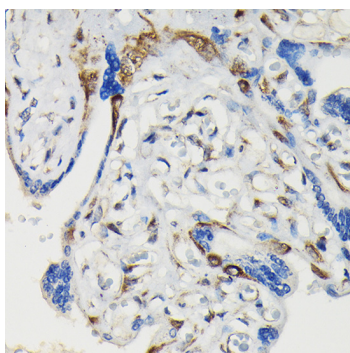
Validation Data



Western blot analysis of lysates from C6 cells, using Phospho-VASP-S239 Rabbit pAb (AP0187) at 1:1000 dilution. C6 cells were treated by Forskolin (10 μ M) at 37°C for 1 hour after serum-starvation overnight. Secondary antibody: HRP Goat Anti-Rabbit IgG (H+L) (AS014) at 1:10000 dilution. Lysates/proteins: 25 μ g per lane. Blocking buffer: 3% nonfat dry milk in TBST. Detection: ECL Basic Kit (RM00020). Exposure time: 90s.



Immunohistochemistry analysis of Phospho-VASP-S239 in paraffin-embedded rat spleen using Phospho-VASP-S239 Rabbit pAb (AP0187) at dilution of 1:100 (40x lens). Perform high pressure antigen retrieval with 10 mM citrate buffer pH 6.0 before commencing with IHC staining protocol.



Immunohistochemistry analysis of Phospho-VASP-S239 in paraffin-embedded human placenta using Phospho-VASP-S239 Rabbit pAb (AP0187) at dilution of 1:100 (40x lens). Perform high pressure antigen retrieval with 10 mM citrate buffer pH 6.0 before commencing with IHC staining protocol.