

AE116

Leader in Biomolecular Solutions for Life Science



PE Mouse anti DDDDK-Tag mAb

Catalog No.: AE116

Basic Information

Observed MW

Calculated MW

Category

ABflo Flow Cytometry Antibody

Applications

FC

Cross-Reactivity

Species independent

CloneNo number

AMC0382-PE

Conjugate

PE. Ex:565nm. Em:574nm.

Background

FLAG-tag, or FLAG octapeptide, or FLAG epitope, is a polypeptide protein tag that can be added to a protein using recombinant DNA technology, having the sequence motif DYKDDDDK. It has been used for studying proteins in living cells and for protein purification by affinity chromatography. It has been used to separate recombinant, overexpressed protein from wild-type protein expressed by the host organism. It can also be used in the isolation of protein complexes with multiple subunits, because its mild purification procedure tends not to disrupt such complexes. It has been used to obtain proteins of sufficient purity and quality to carry out 3D structure determination by x-ray crystallography. A FLAG-tag can be used in many different assays that require recognition by an antibody. If there is no antibody against a given protein, adding a FLAG-tag to a protein allows the protein to be studied with an antibody against the FLAG sequence. Examples are cellular localization studies by immunofluorescence or detection by SDS PAGE protein electrophoresis and Western blotting.

Recommended Dilutions

FC 5 μ l per 10^6 cells in
100 μ l volume

Immunogen Information

Gene ID

Swiss Prot

Immunogen

A synthetic peptide corresponding to DDDDK tag.

Synonyms

DDDDK;DDDDK tag;DDDDK-tag

Contact



www.abclonal.com

Product Information

Source

Mouse

Isotype

IgG

Purification

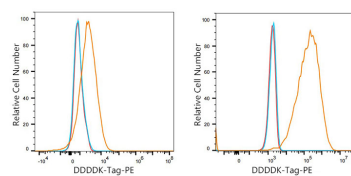
Affinity purification

Storage

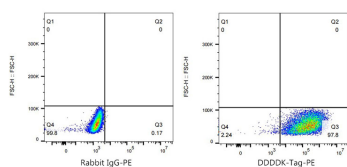
Store at 2-8°C. Avoid freeze / thaw cycles.

Buffer: PBS with 0.03% proclin300,pH7.3.

Validation Data



Flow cytometry: 1×10^6 CHO cells (negative control) cells and CHO(Transfection,right) cells were surface-stained with PE Mouse anti DDDDK-Tag mAb(AE116,5 μ l/Test,orange line) or PE Mouse IgG isotype control (5 μ l/Test,blue line).Non-fluorescently stained cells were used as blank control (red line).



Flow cytometry: 1×10^6 CHO(Transfection) cells were surface-stained with PE Mouse IgG isotype control (5 μ l/Test,left) or PE Mouse anti DDDDK-Tag mAb(AE116,5 μ l/Test,right).