

A9928

Leader in Biomolecular Solutions for Life Science



## ATP1B2 Rabbit pAb

Catalog No.: A9928

### Basic Information

#### Observed MW

42kDa

#### Calculated MW

33kDa

#### Category

Polyclonal Antibody

#### Applications

WB,IF/ICC,ELISA

#### Cross-Reactivity

Human,Mouse,Rat

### Background

The protein encoded by this gene belongs to the family of Na<sup>+</sup>/K<sup>+</sup> and H<sup>+</sup>/K<sup>+</sup> ATPases beta chain proteins, and to the subfamily of Na<sup>+</sup>/K<sup>+</sup> -ATPases. Na<sup>+</sup>/K<sup>+</sup> -ATPase is an integral membrane protein responsible for establishing and maintaining the electrochemical gradients of Na and K ions across the plasma membrane. These gradients are essential for osmoregulation, for sodium-coupled transport of a variety of organic and inorganic molecules, and for electrical excitability of nerve and muscle. This enzyme is composed of two subunits, a large catalytic subunit (alpha) and a smaller glycoprotein subunit (beta). The beta subunit regulates, through assembly of alpha/beta heterodimers, the number of sodium pumps transported to the plasma membrane. The glycoprotein subunit of Na<sup>+</sup>/K<sup>+</sup> -ATPase is encoded by multiple genes. This gene encodes a beta 2 subunit. Two transcript variants encoding different isoforms have been found for this gene.

### Recommended Dilutions

WB	1:500 - 1:2000
IF/ICC	1:50 - 1:200

### Immunogen Information

#### Gene ID

482

#### Swiss Prot

P14415

#### Immunogen

Recombinant fusion protein containing a sequence corresponding to amino acids 68-290 of human ATP1B2 (NP\_001669.3).

#### Synonyms

AMOG; ATP1B2

### Contact



[www.abclonal.com](http://www.abclonal.com)

### Product Information

#### Source

Rabbit

#### Isotype

IgG

#### Purification

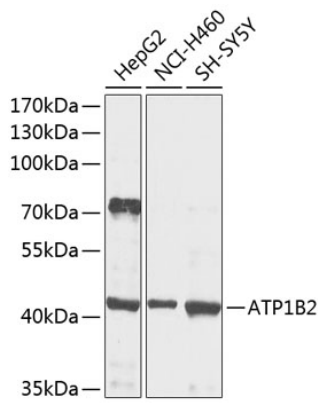
Affinity purification

#### Storage

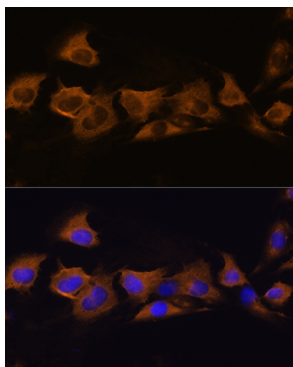
Store at -20°C. Avoid freeze / thaw cycles.

Buffer: PBS with 0.02% sodium azide,50% glycerol,pH7.3.

Validation Data



Western blot analysis of extracts of various cell lines, using ATP1B2 antibody (A9928) at 1:1000 dilution. Secondary antibody: HRP Goat Anti-Rabbit IgG (H+L) (AS014) at 1:10000 dilution. Lysates/proteins: 25µg per lane. Blocking buffer: 3% nonfat dry milk in TBST. Detection: ECL Enhanced Kit (RM00021). Exposure time: 30s.



Immunofluorescence analysis of C6 cells using ATP1B2 Rabbit pAb (A9928) at dilution of 1:100. Blue: DAPI for nuclear staining.