

ATP12A Rabbit pAb

Catalog No.: A8887

Basic Information

Observed MW

100kDa

Calculated MW

116kDa

Category

Primary antibody

Applications

WB,FC

Cross-Reactivity

Human

Background

The protein encoded by this gene belongs to the family of P-type cation transport ATPases. This gene encodes a catalytic subunit of the ouabain-sensitive H⁺/K⁺ -ATPase that catalyzes the hydrolysis of ATP coupled with the exchange of H(+) and K(+) ions across the plasma membrane. It is also responsible for potassium absorption in various tissues. Two transcript variants encoding different isoforms have been found for this gene.

Recommended Dilutions

WB	1:500 - 1:1000
FC	1:20 - 1:50

Immunogen Information

Gene ID	Swiss Prot
479	P54707

Immunogen

A synthetic Peptide of human ATP12A

Synonyms

HK; ATP1A1; H-K-ATPase; ATP12A

Contact

 | www.abclonal.com

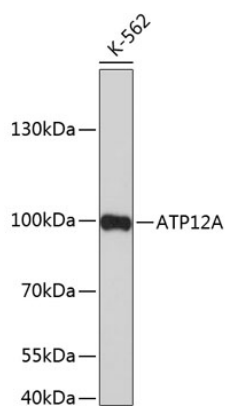
Product Information

Source	Isotype	Purification
Rabbit	IgG	Affinity purification

Storage

Store at 4°C. Avoid freeze / thaw cycles.
Buffer: PBS with 0.02% sodium azide,pH7.3.

Validation Data



Western blot analysis of extracts of K-562 cells, using ATP12A antibody (A8887).
Secondary antibody: HRP Goat Anti-Rabbit IgG (H+L) (A5014) at 1:10000 dilution.
Lysates/proteins: 25µg per lane.
Blocking buffer: 3% nonfat dry milk in TBST.