

A8882

Leader in Biomolecular Solutions for Life Science



## NCDN Rabbit pAb

Catalog No.: A8882

### Basic Information

**Observed MW**

72kDa

**Calculated MW**

79kDa

**Category**

Polyclonal Antibody

**Applications**

WB

**Cross-Reactivity**

Human

### Background

This gene encodes a leucine-rich cytoplasmic protein, which is highly similar to a mouse protein that negatively regulates Ca/calmodulin-dependent protein kinase II phosphorylation and may be essential for spatial learning processes. Several alternatively spliced transcript variants of this gene have been described.

### Recommended Dilutions

WB 1:500 - 1:1000

### Immunogen Information

**Gene ID**

23154

**Swiss Prot**

Q9UBB6

**Immunogen**

A synthetic Peptide of human NCDN

**Synonyms**

NEDIES; NCDN

### Contact



[www.abclonal.com](http://www.abclonal.com)

### Product Information

**Source**

Rabbit

**Isotype**

IgG

**Purification**

Affinity purification

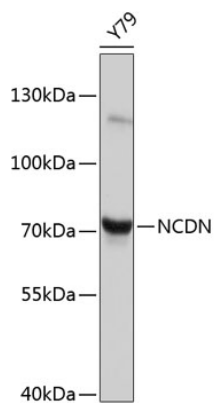
**Storage**

Store at 4°C. Avoid freeze / thaw cycles.

Buffer: PBS with 0.02% sodium azide, pH7.3.

## Validation Data

---



Western blot analysis of extracts of Y79 cells, using NCDN antibody (A8882).  
Secondary antibody: HRP Goat Anti-Rabbit IgG (H+L) (A5014) at 1:10000 dilution.  
Lysates/proteins: 25µg per lane.  
Blocking buffer: 3% nonfat dry milk in TBST.