

A8864

Leader in Biomolecular Solutions for Life Science



CPT1C Rabbit pAb

Catalog No.: A8864

Basic Information

Observed MW

74kDa

Calculated MW

91kDa

Category

Mouse Monoclonal Antibody

Applications

WB,FC

Cross-Reactivity

Human

Background

This gene encodes a member of the carnitine/choline acetyltransferase family. The encoded protein regulates the beta-oxidation and transport of long-chain fatty acids into mitochondria, and may play a role in the regulation of feeding behavior and whole-body energy homeostasis. Alternatively spliced transcript variants encoding multiple protein isoforms have been observed for this gene.

Recommended Dilutions

WB	1:500 - 1:1000
FC	1:20 - 1:50

Immunogen Information

Gene ID

126129

Swiss Prot

Q8TCG5

Immunogen

A synthetic Peptide of human CPT1C

Synonyms

CATL1; CPT1P; CPTIC; SPG73; CPT1-B; CPTI-B; CPT1C

Contact



www.abclonal.com

Product Information

Source

Rabbit

Isotype

IgG

Purification

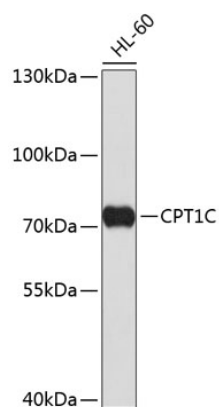
Affinity purification

Storage

Store at 4°C. Avoid freeze / thaw cycles.

Buffer: PBS with 0.02% sodium azide,pH7.3.

Validation Data



Western blot analysis of extracts of HL-60 cells, using CPT1C antibody (A8864).
Secondary antibody: HRP Goat Anti-Rabbit IgG (H+L) (A5014) at 1:10000 dilution.
Lysates/proteins: 25µg per lane.
Blocking buffer: 3% nonfat dry milk in TBST.