

A8690

Leader in Biomolecular Solutions for Life Science



## Cytokeratin 16 (KRT16) Rabbit mAb

Catalog No.: A8690

Recombinant

1 Publications

### Basic Information

#### Observed MW

50kDa

#### Calculated MW

51kDa

#### Category

SMab Recombinant Monoclonal Antibody

#### Applications

WB, IHC-P, IF/ICC, ELISA

#### Cross-Reactivity

Human, Mouse, Rat

#### CloneNo number

ARC1783

### Background

The protein encoded by this gene is a member of the keratin gene family. The keratins are intermediate filament proteins responsible for the structural integrity of epithelial cells and are subdivided into cytokeratins and hair keratins. Most of the type I cytokeratins consist of acidic proteins which are arranged in pairs of heterotypic keratin chains and are clustered in a region of chromosome 17q12-q21. This keratin has been coexpressed with keratin 14 in a number of epithelial tissues, including esophagus, tongue, and hair follicles. Mutations in this gene are associated with type 1 pachyonychia congenita, non-epidermolytic palmoplantar keratoderma and unilateral palmoplantar verrucous nevus.

### Recommended Dilutions

WB	1:500 - 1:1000
IHC-P	1:50 - 1:200
IF/ICC	1:50 - 1:200

### Immunogen Information

#### Gene ID

3868

#### Swiss Prot

P08779

#### Immunogen

A synthetic peptide corresponding to a sequence within amino acids 1-100 of human Cytokeratin 16 (KRT16) (P08779).

#### Synonyms

K16; PC1; CK16; K1CP; NEPPK; FNEPPK; KRT16A; Cytokeratin 16 (KRT16)

### Contact



[www.abclonal.com](http://www.abclonal.com)

### Product Information

#### Source

Rabbit

#### Isotype

IgG

#### Purification

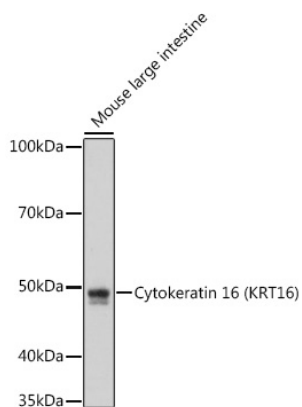
Affinity purification

#### Storage

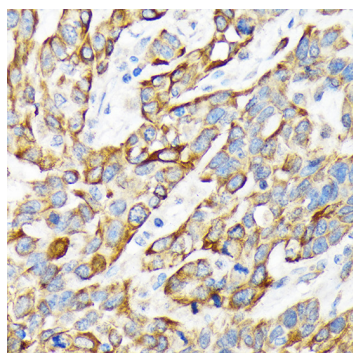
Store at -20°C. Avoid freeze / thaw cycles.

Buffer: PBS with 0.02% sodium azide, 0.05% BSA, 50% glycerol, pH7.3.

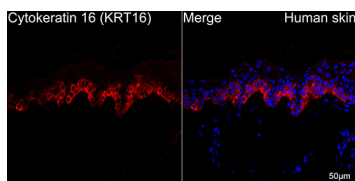
## Validation Data



Western blot analysis of lysates from Mouse large intestine, using Cytokeratin 16 (KRT16) Rabbit mAb (A8690) at 1:1000 dilution.  
Secondary antibody: HRP Goat Anti-Rabbit IgG (H+L) (AS014) at 1:10000 dilution.  
Lysates/proteins: 25µg per lane.  
Blocking buffer: 3% nonfat dry milk in TBST.  
Detection: ECL Enhanced Kit (RM00021).  
Exposure time: 180s.



Immunohistochemistry analysis of Cytokeratin 16 (KRT16) in paraffin-embedded human esophageal cancer using Cytokeratin 16 (KRT16) Rabbit mAb (A8690) at dilution of 1:100 (40x lens). Perform microwave antigen retrieval with 10 mM Tris/EDTA buffer pH 9.0 before commencing with IHC staining protocol.



Confocal imaging of paraffin-embedded Human skin using Cytokeratin 16 (KRT16) Rabbit mAb (A8690, dilution 1:200) followed by a further incubation with Cy3 Goat Anti-Rabbit IgG (H+L) (AS007, dilution 1:500) (Red). DAPI was used for nuclear staining (Blue). Objective: 40x. Perform high pressure antigen retrieval with 0.01 M citrate buffer (pH 6.0) prior to IF staining.