

A7094

Leader in Biomolecular Solutions for Life Science



# TES Rabbit pAb

Catalog No.: A7094

## Basic Information

### Observed MW

47kDa

### Calculated MW

48kDa

### Category

Polyclonal Antibody

### Applications

WB,IHC-P,ELISA

### Cross-Reactivity

Human,Rat

## Background

Cancer-associated chromosomal changes often involve regions containing fragile sites. This gene maps to a common fragile site on chromosome 7q31.2 designated FRA7G. This gene is similar to mouse Testin, a testosterone-responsive gene encoding a Sertoli cell secretory protein containing three LIM domains. LIM domains are double zinc-finger motifs that mediate protein-protein interactions between transcription factors, cytoskeletal proteins and signaling proteins. This protein is a negative regulator of cell growth and may act as a tumor suppressor. This scaffold protein may also play a role in cell adhesion, cell spreading and in the reorganization of the actin cytoskeleton. Multiple protein isoforms are encoded by transcript variants of this gene.

## Recommended Dilutions

WB	1:500 - 1:2000
IHC-P	1:50 - 1:200

## Immunogen Information

### Gene ID

26136

### Swiss Prot

Q9UGI8

### Immunogen

Recombinant fusion protein containing a sequence corresponding to amino acids 1-260 of human TES (NP\_056456.1).

### Synonyms

TESS; TESS-2; TES

## Contact



[www.abclonal.com](http://www.abclonal.com)

## Product Information

### Source

Rabbit

### Isotype

IgG

### Purification

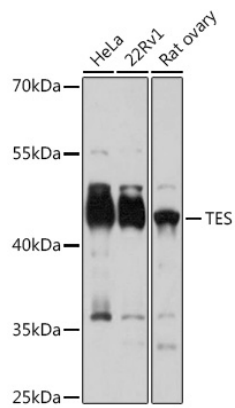
Affinity purification

### Storage

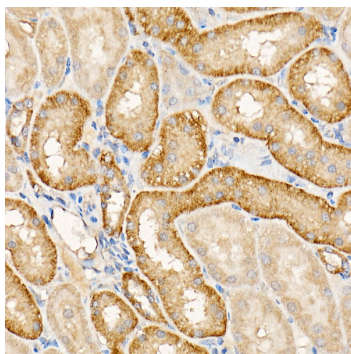
Store at -20°C. Avoid freeze / thaw cycles.

Buffer: PBS with 0.01% thimerosal, 50% glycerol, pH7.3.

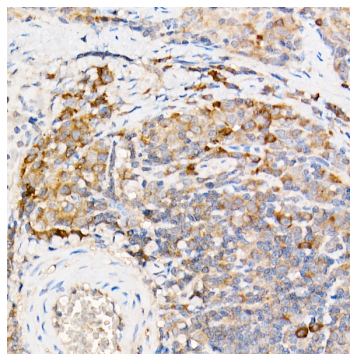
## Validation Data



Western blot analysis of various lysates using TES Rabbit pAb (A7094) at 1:3000 dilution.  
Secondary antibody: HRP Goat Anti-Rabbit IgG (H+L) (AS014) at 1:10000 dilution.  
Lysates/proteins: 25µg per lane.  
Blocking buffer: 3% nonfat dry milk in TBST.  
Detection: ECL Basic Kit (RM00020).  
Exposure time: 30s.



Immunohistochemistry analysis of TES in paraffin-embedded rat kidney using TES Rabbit pAb (A7094) at dilution of 1:200 (40x lens). Perform high pressure antigen retrieval with 10 mM citrate buffer pH 6.0 before commencing with IHC staining protocol.



Immunohistochemistry analysis of TES in paraffin-embedded rat spleen using TES Rabbit pAb (A7094) at dilution of 1:200 (40x lens). Perform high pressure antigen retrieval with 10 mM citrate buffer pH 6.0 before commencing with IHC staining protocol.