

A6927

Leader in Biomolecular Solutions for Life Science



## KCND3 Rabbit pAb

Catalog No.: A6927

3 Publications

### Basic Information

#### Observed MW

73kDa

#### Calculated MW

73kDa

#### Category

Polyclonal Antibody

#### Applications

WB, IHC-P, ELISA

#### Cross-Reactivity

Human, Mouse, Rat

### Background

Voltage-gated potassium (Kv) channels represent the most complex class of voltage-gated ion channels from both functional and structural standpoints. Their diverse functions include regulating neurotransmitter release, heart rate, insulin secretion, neuronal excitability, epithelial electrolyte transport, smooth muscle contraction, and cell volume. Four sequence-related potassium channel genes - shaker, shaw, shab, and shal - have been identified in *Drosophila*, and each has been shown to have human homolog(s). This gene encodes a member of the potassium channel, voltage-gated, shal-related subfamily, members of which form voltage-activated A-type potassium ion channels and are prominent in the repolarization phase of the action potential. This member includes two isoforms with different sizes, which are encoded by alternatively spliced transcript variants of this gene.

### Recommended Dilutions

WB	1:100 - 1:500
IHC-P	1:50 - 1:200

### Immunogen Information

#### Gene ID

3752

#### Swiss Prot

Q9UK17

#### Immunogen

Recombinant fusion protein containing a sequence corresponding to amino acids 521-655 of human KCND3 (NP\_004971.2).

#### Synonyms

KV4.3; SCA19; SCA22; BRGDA9; KCND3L; KCND3S; KSHIVB; KCND3

### Contact



[www.abclonal.com](http://www.abclonal.com)

### Product Information

#### Source

Rabbit

#### Isotype

IgG

#### Purification

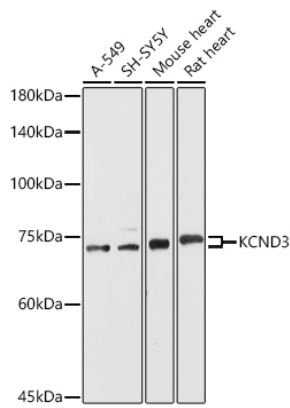
Affinity purification

#### Storage

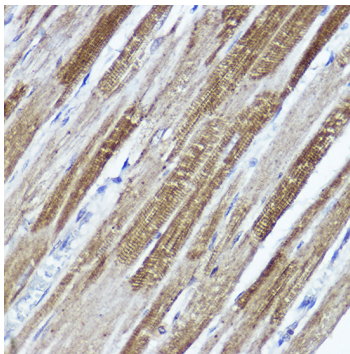
Store at -20°C. Avoid freeze / thaw cycles.

Buffer: PBS with 0.05% proclin300, 50% glycerol, pH7.3.

## Validation Data



Western blot analysis of extracts of various cell lines, using KCND3 antibody (A6927) at 1:500 dilution.  
Secondary antibody: HRP Goat Anti-Rabbit IgG (H+L) (AS014) at 1:10000 dilution.  
Lysates/proteins: 25µg per lane.  
Blocking buffer: 3% nonfat dry milk in TBST.  
Detection: ECL Basic Kit (RM00020).  
Exposure time: 90s.



Immunohistochemistry analysis of paraffin-embedded rat heart using KCND3 Rabbit pAb (A6927) at dilution of 1:100 (40x lens). Perform high pressure antigen retrieval with 10 mM citrate buffer pH 6.0 before commencing with IHC staining protocol.