

A6562

Leader in Biomolecular Solutions for Life Science



COCH Rabbit pAb

Catalog No.: A6562

Basic Information

Observed MW

Refer to Figures

Calculated MW

59kDa

Category

Polyclonal Antibody

Applications

IHC-P,IF/ICC,ELISA

Cross-Reactivity

Human

Background

The protein encoded by this gene is highly conserved in human, mouse, and chicken, showing 94% and 79% amino acid identity of human to mouse and chicken sequences, respectively. Hybridization to this gene was detected in spindle-shaped cells located along nerve fibers between the auditory ganglion and sensory epithelium. These cells accompany neurites at the habenula perforata, the opening through which neurites extend to innervate hair cells. This and the pattern of expression of this gene in chicken inner ear paralleled the histologic findings of acidophilic deposits, consistent with mucopolysaccharide ground substance, in temporal bones from DFNA9 (autosomal dominant nonsyndromic sensorineural deafness 9) patients. Mutations that cause DFNA9 have been reported in this gene. Alternative splicing results in multiple transcript variants encoding the same protein. Additional splice variants encoding distinct isoforms have been described but their biological validities have not been demonstrated.

Recommended Dilutions

IHC-P	1:50 - 1:100
IF/ICC	1:50 - 1:100

Immunogen Information

Gene ID

1690

Swiss Prot

O43405

Immunogen

Recombinant fusion protein containing a sequence corresponding to amino acids 20-260 of human COCH (NP_001128530.1).

Synonyms

DFNA9; COCH5B2; DFNB110; COCH-5B2; COCH

Contact



www.abclonal.com

Product Information

Source

Rabbit

Isotype

IgG

Purification

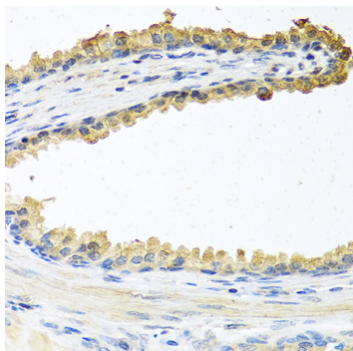
Affinity purification

Storage

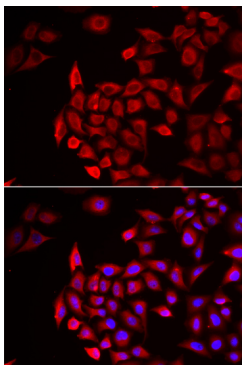
Store at -20°C. Avoid freeze / thaw cycles.

Buffer: PBS with 0.02% sodium azide, 50% glycerol, pH 7.3.

Validation Data



Immunohistochemistry analysis of paraffin-embedded human prostate using COCH antibody (A6562) at dilution of 1:100 (40x lens). Perform microwave antigen retrieval with 10 mM PBS buffer pH 7.2 before commencing with IHC staining protocol.



Immunofluorescence analysis of HeLa cells using COCH antibody (A6562). Blue: DAPI for nuclear staining.