

# DNA topoisomerase II alpha (TOP2A) Rabbit mAb

Catalog No.: A4389 **Recombinant**

## Basic Information

**Observed MW**

190kDa

**Calculated MW**

174kDa/178kDa/179kDa/183kDa

**Category**

Primary antibody

**Applications**

ELISA, WB

**Cross-Reactivity**

Human, Mouse

**CloneNo number**

ARC0994

## Recommended Dilutions

**WB** 1:500 - 1:1000

## Background

This gene encodes a DNA topoisomerase, an enzyme that controls and alters the topologic states of DNA during transcription. This nuclear enzyme is involved in processes such as chromosome condensation, chromatid separation, and the relief of torsional stress that occurs during DNA transcription and replication. It catalyzes the transient breaking and rejoining of two strands of duplex DNA which allows the strands to pass through one another, thus altering the topology of DNA. Two forms of this enzyme exist as likely products of a gene duplication event. The gene encoding this form, alpha, is localized to chromosome 17 and the beta gene is localized to chromosome 3. The gene encoding this enzyme functions as the target for several anticancer agents and a variety of mutations in this gene have been associated with the development of drug resistance. Reduced activity of this enzyme may also play a role in ataxia-telangiectasia.

## Immunogen Information

**Gene ID**

7153

**Swiss Prot**

P11388

**Immunogen**

A synthetic peptide corresponding to a sequence within amino acids 1432-1531 of human DNA topoisomerase II alpha (TOP2A) (P11388).

**Synonyms**

TOP2; TP2A; TOPIIA; TOP2alpha; DNA topoisomerase II alpha (TOP2A)

## Contact

 | [www.abclonal.com](http://www.abclonal.com)

## Product Information

**Source**

Rabbit

**Isotype**

IgG

**Purification**

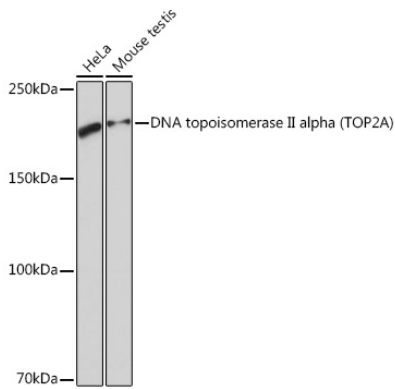
Affinity purification

**Storage**

Store at -20°C. Avoid freeze / thaw cycles.

Buffer: PBS with 0.02% sodium azide, 0.05% BSA, 50% glycerol, pH7.3.

# Validation Data



Western blot analysis of extracts of various cell lines, using DNA topoisomerase II alpha (TOP2A) Rabbit mAb (A4389) at 1:1000 dilution.  
Secondary antibody: HRP Goat Anti-Rabbit IgG (H+L) (A5014) at 1:10000 dilution.  
Lysates/proteins: 25µg per lane.  
Blocking buffer: 3% nonfat dry milk in TBST.  
Detection: ECL Basic Kit (RM00020).  
Exposure time: 3s.