

A4086

Leader in Biomolecular Solutions for Life Science



RPL23A Rabbit pAb

Catalog No.: A4086

Basic Information

Observed MW

20kDa

Calculated MW

18kDa

Category

Polyclonal Antibody

Applications

WB, IHC-P, IF/ICC, ELISA

Cross-Reactivity

Human, Mouse, Rat

Background

Ribosomes, the organelles that catalyze protein synthesis, consist of a small 40S subunit and a large 60S subunit. Together these subunits are composed of 4 RNA species and approximately 80 structurally distinct proteins. This gene encodes a ribosomal protein that is a component of the 60S subunit. The protein belongs to the L23P family of ribosomal proteins. It is located in the cytoplasm. The protein may be one of the target molecules involved in mediating growth inhibition by interferon. In yeast, the corresponding protein binds to a specific site on the 26S rRNA. This gene is co-transcribed with the U42A, U42B, U101A, and U101B small nucleolar RNA genes, which are located in its third, first, second, and fourth introns, respectively. As is typical for genes encoding ribosomal proteins, there are multiple processed pseudogenes of this gene dispersed through the genome.

Recommended Dilutions

| | |
|--------|----------------|
| WB | 1:500 - 1:2000 |
| IHC-P | 1:50 - 1:200 |
| IF/ICC | 1:50 - 1:100 |

Immunogen Information

Gene ID

6147

Swiss Prot

P62750

Immunogen

Recombinant fusion protein containing a sequence corresponding to amino acids 1-156 of human RPL23A (NP_000975.2).

Synonyms

L23A; uL23; MDA20; RPL23A

Contact



www.abclonal.com

Product Information

Source

Rabbit

Isotype

IgG

Purification

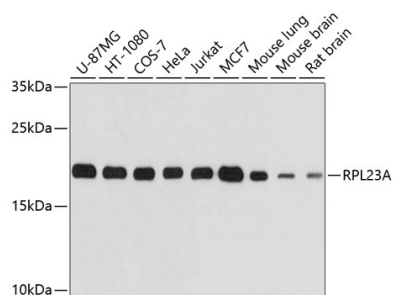
Affinity purification

Storage

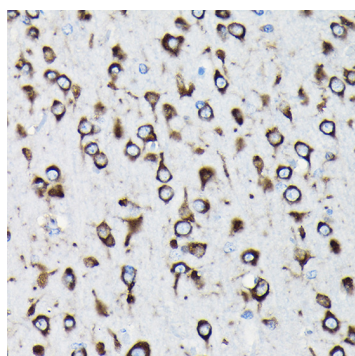
Store at -20°C. Avoid freeze / thaw cycles.

Buffer: PBS with 0.02% sodium azide, 50% glycerol, pH 7.3.

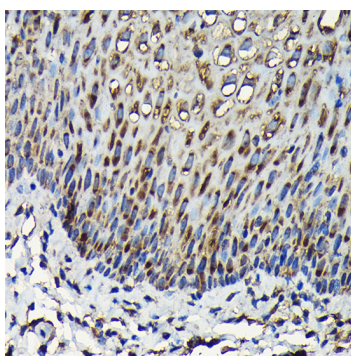
Validation Data



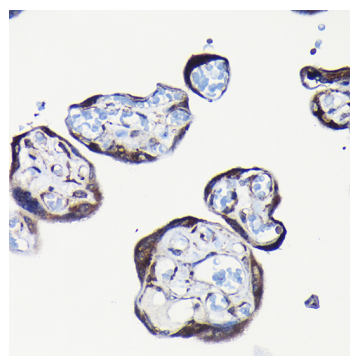
Western blot analysis of extracts of various cell lines, using RPL23A antibody (A4086) at 1:1000 dilution. Secondary antibody: HRP Goat Anti-Rabbit IgG (H+L) (A5014) at 1:10000 dilution. Lysates/proteins: 25µg per lane. Blocking buffer: 3% nonfat dry milk in TBST. Detection: ECL Basic Kit (RM00020). Exposure time: 10s.



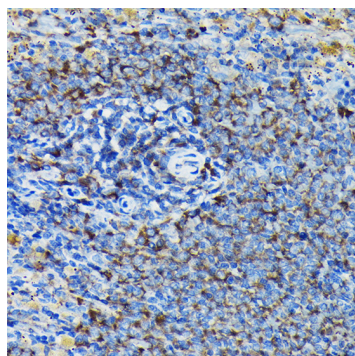
Immunohistochemistry analysis of paraffin-embedded rat brain using RPL23A Rabbit pAb (A4086) at dilution of 1:100 (40x lens). Perform high pressure antigen retrieval with 10 mM citrate buffer pH 6.0 before commencing with IHC staining protocol.



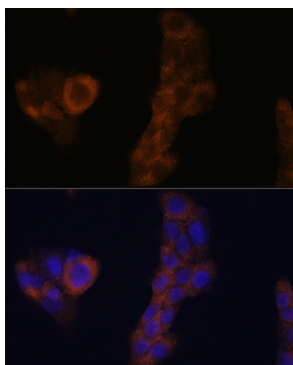
Immunohistochemistry analysis of paraffin-embedded human esophageal using RPL23A Rabbit pAb (A4086) at dilution of 1:100 (40x lens). Perform high pressure antigen retrieval with 10 mM citrate buffer pH 6.0 before commencing with IHC staining protocol.



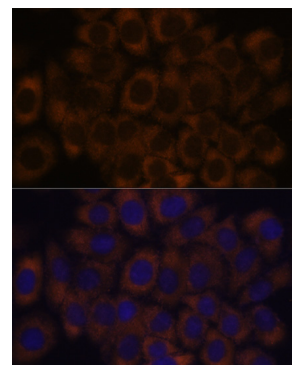
Immunohistochemistry analysis of paraffin-embedded human placenta using RPL23A Rabbit pAb (A4086) at dilution of 1:100 (40x lens). Perform high pressure antigen retrieval with 10 mM citrate buffer pH 6.0 before commencing with IHC staining protocol.



Immunohistochemistry analysis of paraffin-embedded mouse spleen using RPL23A Rabbit pAb (A4086) at dilution of 1:100 (40x lens). Perform high pressure antigen retrieval with 10 mM citrate buffer pH 6.0 before commencing with IHC staining protocol.

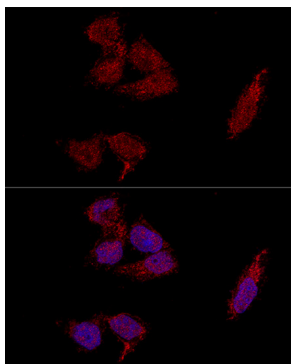


Immunofluorescence analysis of A-431 cells using RPL23A antibody (A4086) at dilution of 1:100. Blue: DAPI for nuclear staining.



Immunofluorescence analysis of HeLa cells using RPL23A antibody (A4086) at dilution of 1:100. Blue: DAPI for nuclear staining.

Validation Data



Confocal immunofluorescence analysis of HeLa cells using RPL23A antibody (A4086) at dilution of 1:100. Blue: DAPI for nuclear staining.