

A3618

Leader in Biomolecular Solutions for Life Science



RB Rabbit mAb

Catalog No.: A3618

Recombinant

2 Publications

Basic Information

Observed MW

110kDa

Calculated MW

106kDa

Category

SMab Recombinant Monoclonal Antibody

Applications

IF/ICC,ELISA

Cross-Reactivity

Human

CloneNo number

ARC0810

Background

The protein encoded by this gene is a negative regulator of the cell cycle and was the first tumor suppressor gene found. The encoded protein also stabilizes constitutive heterochromatin to maintain the overall chromatin structure. The active, hypophosphorylated form of the protein binds transcription factor E2F1. Defects in this gene are a cause of childhood cancer retinoblastoma (RB), bladder cancer, and osteogenic sarcoma.

Recommended Dilutions

IF/ICC 1:50 - 1:200

Immunogen Information

Gene ID

5925

Swiss Prot

P06400

Immunogen

Recombinant fusion protein containing a sequence corresponding to amino acids 729-928 of human RB (P06400).

Synonyms

RB; pRb; OSRC; pp110; p105-Rb; PPP1R130; p110-RB1

Contact



www.abclonal.com

Product Information

Source

Rabbit

Isotype

IgG

Purification

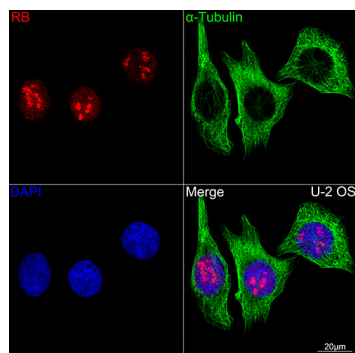
Affinity purification

Storage

Store at -20°C. Avoid freeze / thaw cycles.

Buffer: PBS with 0.02% sodium azide,0.05% BSA,50% glycerol,pH7.3.

Validation Data



Confocal imaging of U-2 OS cells using RB Rabbit mAb (A3618,dilution 1:100)(Red). The cells were counterstained with α -Tubulin Mouse mAb (AC012,dilution 1:400) (Green). DAPI was used for nuclear staining (blue). Objective: 100x.