

A3405

Leader in Biomolecular Solutions for Life Science



Thyroglobulin Rabbit mAb

Catalog No.: A3405 **Recombinant**

Basic Information

Observed MW

Refer to figures

Calculated MW

305kDa

Category

SMab Recombinant Monoclonal Antibody

Applications

IHC-P,IF/ICC,ELISA

Cross-Reactivity

Human

CloneNo number

ARC1973

Background

Thyroglobulin (Tg) is a glycoprotein homodimer produced predominantly by the thyroid gland. It acts as a substrate for the synthesis of thyroxine and triiodothyronine as well as the storage of the inactive forms of thyroid hormone and iodine. Thyroglobulin is secreted from the endoplasmic reticulum to its site of iodination, and subsequent thyroxine biosynthesis, in the follicular lumen. Mutations in this gene cause thyroid dysmorphogenesis, manifested as goiter, and are associated with moderate to severe congenital hypothyroidism. Polymorphisms in this gene are associated with susceptibility to autoimmune thyroid diseases (AITD) such as Graves disease and Hashimoto thyroiditis.

Recommended Dilutions

IHC-P	1:50 - 1:200
IF/ICC	1:50 - 1:200

Immunogen Information

Gene ID	Swiss Prot
7038	P01266

Immunogen

Recombinant fusion protein containing a sequence corresponding to amino acids 300-450 of human Thyroglobulin (P01266).

Synonyms

TGN; AITD3; Thyroglobulin

Contact



www.abclonal.com

Product Information

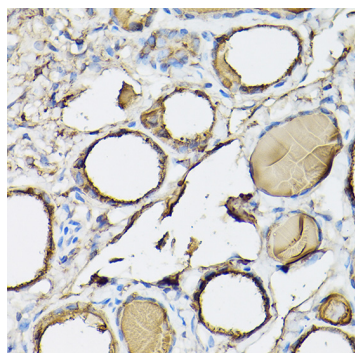
Source	Isotype	Purification
Rabbit	IgG	Affinity purification

Storage

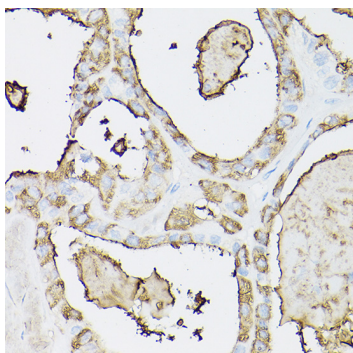
Store at -20°C. Avoid freeze / thaw cycles.

Buffer: PBS with 0.02% sodium azide,0.05% BSA,50% glycerol,pH7.3.

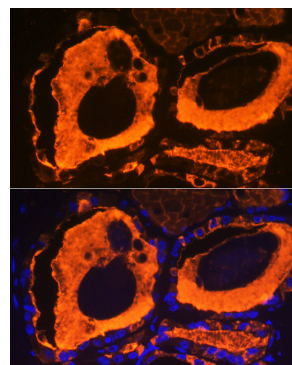
Validation Data



Immunohistochemistry analysis of Thyroglobulin in paraffin-embedded Human normal thyroid using Thyroglobulin Rabbit mAb (A3405) at dilution of 1:100 (40x lens). Perform high pressure antigen retrieval with 10 mM citrate buffer pH 6.0 before commencing with IHC staining protocol.



Immunohistochemistry analysis of Thyroglobulin in paraffin-embedded human thyroid cancer using Thyroglobulin Rabbit mAb (A3405) at dilution of 1:100 (40x lens). Perform high pressure antigen retrieval with 10 mM citrate buffer pH 6.0 before commencing with IHC staining protocol.



Immunofluorescence analysis of paraffin-embedded human thyroid using Thyroglobulin Rabbit mAb (A3405) at dilution of 1:100 (40x lens). Secondary antibody: Cy3 Goat Anti-Rabbit IgG (H+L) (AS007) at 1:500 dilution. Blue: DAPI for nuclear staining.