

A3200

Leader in Biomolecular Solutions for Life Science



## iNOS Rabbit pAb

Catalog No.: A3200

8 Publications

### Basic Information

#### Observed MW

131kDa

#### Calculated MW

131kDa

#### Category

Polyclonal Antibody

#### Applications

WB, ELISA

#### Cross-Reactivity

Human, Mouse

### Background

Nitric oxide is a reactive free radical which acts as a biologic mediator in several processes, including neurotransmission and antimicrobial and antitumoral activities. This gene encodes a nitric oxide synthase which is expressed in liver and is inducible by a combination of lipopolysaccharide and certain cytokines. Three related pseudogenes are located within the Smith-Magenis syndrome region on chromosome 17.

### Recommended Dilutions

WB 1:500 - 1:1000

### Immunogen Information

#### Gene ID

4843

#### Swiss Prot

P35228

#### Immunogen

Recombinant fusion protein containing a sequence corresponding to amino acids 1-170 of human iNOS (NP\_000616.3).

#### Synonyms

NOS; INOS; NOS2A; HEP-NOS; iNOS

### Contact



[www.abclonal.com](http://www.abclonal.com)

### Product Information

#### Source

Rabbit

#### Isotype

IgG

#### Purification

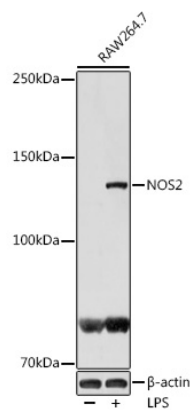
Affinity purification

#### Storage

Store at -20°C. Avoid freeze / thaw cycles.

Buffer: PBS with 0.02% sodium azide, 50% glycerol, pH7.3.

## Validation Data



Western blot analysis of lysates from RAW264.7 cells, using iNOS Rabbit pAb (A3200) at 1:1000 dilution. Raw264.7 cells were treated by LPS (1  $\mu$ g/ml) at 37°C for over night.  
 Secondary antibody: HRP Goat Anti-Rabbit IgG (H+L) (AS014) at 1:10000 dilution.  
 Lysates/proteins: 25 $\mu$ g per lane.  
 Blocking buffer: 3% nonfat dry milk in TBST.  
 Detection: ECL Basic Kit (RM00020).  
 Exposure time: 1s.

Western blot analysis of lysates from RAW264.7 cells, using iNOS Rabbit pAb (A3200) at 1:1000 dilution. Raw264.7 cells were treated by LPS (1  $\mu$ g/ml) at 37°C for 8 hours.  
 Secondary antibody: HRP Goat Anti-Rabbit IgG (H+L) (AS014) at 1:10000 dilution.  
 Lysates/proteins: 25 $\mu$ g per lane.  
 Blocking buffer: 3% nonfat dry milk in TBST.  
 Detection: ECL Basic Kit (RM00020).  
 Exposure time: 1s.

