

A24591

Leader in Biomolecular Solutions for Life Science



ABflo® 594 Rabbit anti-Human CD225/IFITM1 mAb

Catalog No.: A24591

Basic Information

Observed MW

Calculated MW
13kDa

Category

SMab Recombinant Monoclonal Antibody

Applications

FC (intra)

Cross-Reactivity

Human

CloneNo number

ARC55310-ABflo594

Conjugate

ABflo® 594. Ex:588nm. Em:604nm.

Background

Interferon-induced transmembrane (IFITM) proteins are a family of interferon induced antiviral proteins. The family contains five members, including IFITM1, IFITM2 and IFITM3 that belong to the CD225 superfamily. The protein encoded by this gene restricts cellular entry by diverse viral pathogens, such as influenza A virus, Ebola virus and Sars-CoV-2.

Recommended Dilutions

FC (intra) 5 µl per 10⁶ cells in
100 µl volume

Immunogen Information

Gene ID
8519

Swiss Prot
P13164

Immunogen

Recombinant fusion protein containing a sequence within amino acids 1-80 of human CD225/IFITM1 (NP_003632.4).

Synonyms

IFITM1; 9-27; CD225; DSPA2a; IFI17; LEU13; interferon-induced transmembrane protein 1

Contact



www.abclonal.com

Product Information

Source
Rabbit

Isotype
IgG

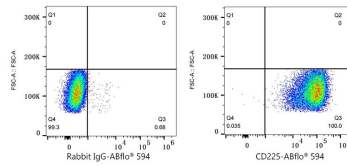
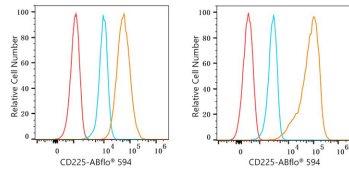
Purification
Affinity purification

Storage

Store at 2-8°C. Avoid freeze.

Buffer: PBS with 0.03% proclin300,0.2% BSA,pH7.3.

Validation Data



Flow cytometry: 1X10⁶ U-251MG cells (Low Expression, left) and K-562 cells (right) were intracellularly-stained with ABflo® 594 Rabbit anti-Human CD225/IFITM1 mAb(A24591,5 μl/Test, orange line) or ABflo® 594 Rabbit IgG isotype control (A23821,5 μl/Test, blue line). Non-fluorescently stained cells were used as blank control (red line).

Flow cytometry: 1X10⁶ K-562 cells were intracellularly-stained with ABflo® 594 Rabbit IgG isotype control (A23821,5 μl/Test, left) or ABflo® 594 Rabbit anti-Human CD225/IFITM1 mAb(A24591,5 μl/Test, right).