

A24501

Leader in Biomolecular Solutions for Life Science



# Yap1 Rabbit pAb

Catalog No.: A24501

## Basic Information

### Observed MW

76kDa

### Calculated MW

52kDa

### Category

Polyclonal Antibody

### Applications

WB, IHC-P, IF/ICC, ELISA

### Cross-Reactivity

Human, Mouse, Rat

## Background

This gene encodes a protein which binds to the SH3 domain of the Yes proto-oncogene product, a tyrosine kinase. This protein contains a WW domain, consisting of four conserved aromatic amino acids including two tryptophan residues. This conserved WW domain is found in various structural, regulatory and signaling molecules in various species, and may play a role in protein-protein interaction. Following cellular damage, phosphorylation of this encoded protein may suppress apoptosis. This protein may be involved in malignant transformation in cancer. Alternative splicing results in multiple transcript variants.

## Recommended Dilutions

WB	1:1000 - 1:5000
IHC-P	1:100 - 1:500
IF/ICC	1:100 - 1:500

## Immunogen Information

### Gene ID

22601

### Swiss Prot

P46938

### Immunogen

Recombinant fusion protein containing a sequence corresponding to amino acids 139-488 of mouse Yap1 (NP\_001164618.1).

### Synonyms

Yap; Yki; Yap65; Yorkie; Yap1

## Contact



[www.abclonal.com](http://www.abclonal.com)

## Product Information

### Source

Rabbit

### Isotype

IgG

### Purification

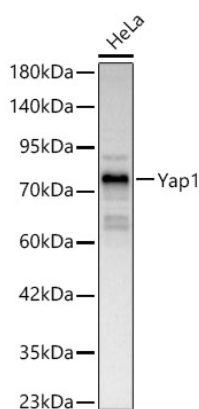
Affinity purification

### Storage

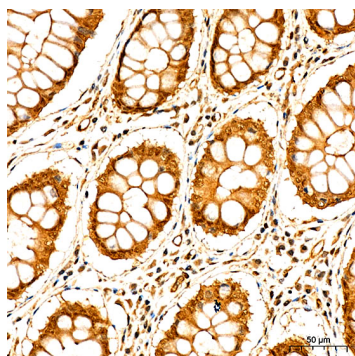
Store at -20°C. Avoid freeze / thaw cycles.

Buffer: PBS with 0.05% proclin300, 50% glycerol, pH7.3.

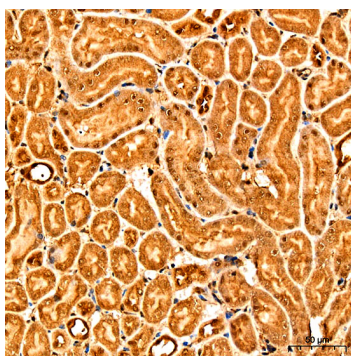
## Validation Data



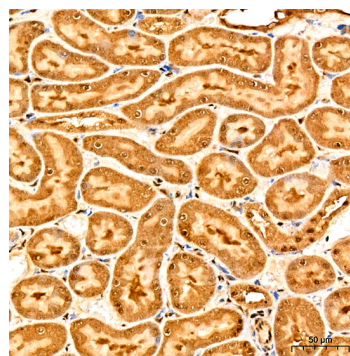
Western blot analysis of lysates from HeLa cells using Yap1 Rabbit pAb(A24501) at 1:2000 dilution.  
Secondary antibody: HRP Goat Anti-Rabbit IgG (H+L) (AS014) at 1:10000 dilution.  
Lysates/proteins: 25 µg per lane.  
Blocking buffer: 3% nonfat dry milk in TBST.  
Detection: ECL Basic Kit (RM00020).  
Exposure time: 45s.



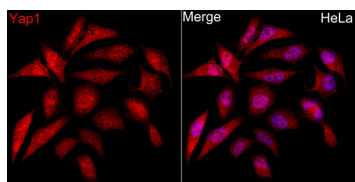
Immunohistochemistry analysis of Yap1 in paraffin-embedded human colon carcinoma tissue using Yap1 Rabbit pAb (A24501) at a dilution of 1:200 (40x lens).High pressure antigen retrieval was performed with 0.01 M citrate buffer (pH 6.0) prior to IHC staining.



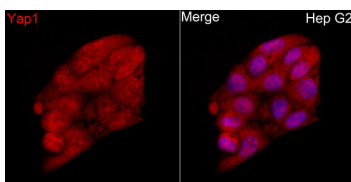
Immunohistochemistry analysis of Yap1 in paraffin-embedded mouse kidney tissue using Yap1 Rabbit pAb (A24501) at a dilution of 1:200 (40x lens).High pressure antigen retrieval was performed with 0.01 M citrate buffer (pH 6.0) prior to IHC staining.



Immunohistochemistry analysis of Yap1 in paraffin-embedded rat kidney tissue using Yap1 Rabbit pAb (A24501) at a dilution of 1:200 (40x lens).High pressure antigen retrieval was performed with 0.01 M citrate buffer (pH 6.0) prior to IHC staining.



Immunofluorescence analysis of HeLa cells using Yap1 Rabbit pAb (A24501) at dilution of 1:200 (40x lens). Secondary antibody: Cy3 Goat Anti-Rabbit IgG (H+L) (AS007) at 1:500 dilution. Blue: DAPI for nuclear staining.



Immunofluorescence analysis of HepG2 cells using Yap1 Rabbit pAb (A24501) at dilution of 1:200 (40x lens). Secondary antibody: Cy3 Goat Anti-Rabbit IgG (H+L) (AS007) at 1:500 dilution. Blue: DAPI for nuclear staining.