

A24431

Leader in Biomolecular Solutions for Life Science



# Survivin Rabbit pAb

Catalog No.: A24431

## Basic Information

### Observed MW

16kDa

### Calculated MW

16kDa

### Category

Polyclonal Antibody

### Applications

WB,IF/ICC

### Cross-Reactivity

Human,Rat

## Background

This gene is a member of the inhibitor of apoptosis (IAP) gene family, which encode negative regulatory proteins that prevent apoptotic cell death. IAP family members usually contain multiple baculovirus IAP repeat (BIR) domains, but this gene encodes proteins with only a single BIR domain. The encoded proteins also lack a C-terminus RING finger domain. Gene expression is high during fetal development and in most tumors, yet low in adult tissues. Alternatively spliced transcript variants encoding distinct isoforms have been found for this gene.

## Recommended Dilutions

WB 1:1000 - 1:5000

IF/ICC 1:50 - 1:200

## Immunogen Information

### Gene ID

332

### Swiss Prot

O15392

### Immunogen

A synthetic peptide corresponding to a sequence within amino acids 1-142 of human Survivin (NP\_001159.2)

### Synonyms

API4; EPR-1; Survivin(Ab-117)

## Contact



[www.abclonal.com](http://www.abclonal.com)

## Product Information

### Source

Rabbit

### Isotype

IgG

### Purification

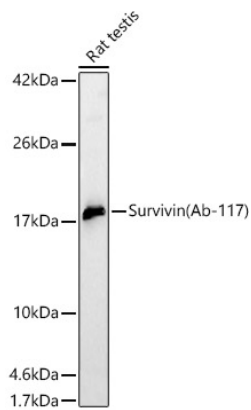
Affinity purification

### Storage

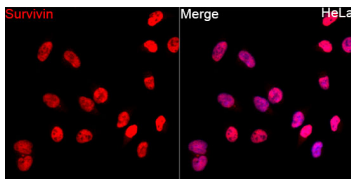
Store at -20°C. Avoid freeze / thaw cycles.

Buffer: PBS with 0.05% proclin300,50% glycerol,pH7.3.

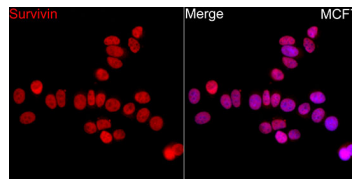
## Validation Data



Western blot analysis of lysates from Rat testis, using Survivin Rabbit pAb (A24431) at 1:2000 dilution.  
Secondary antibody: HRP Goat Anti-Rabbit IgG (H+L) (AS014) at 1:10000 dilution.  
Lysates/proteins: 25ug per lane.  
Blocking buffer: 3% nonfat dry milk in TBST.  
Detection: ECL Basic Kit (RM00020).  
Exposure time: 180s.



Immunofluorescence analysis of HeLa cells using Survivin Rabbit pAb (A24431) at dilution of 1:100 (40x lens). Secondary antibody: Cy3 Goat Anti-Rabbit IgG (H+L) (AS007) at 1:500 dilution. Blue: DAPI for nuclear staining.



Immunofluorescence analysis of MCF7 cells using Survivin Rabbit pAb (A24431) at dilution of 1:100 (40x lens). Secondary antibody: Cy3 Goat Anti-Rabbit IgG (H+L) (AS007) at 1:500 dilution. Blue: DAPI for nuclear staining.