

A24388

Leader in Biomolecular Solutions for Life Science



[KD Validated] EGFR Rabbit PolymAb®

Catalog No.: A24388

Basic Information

Observed MW

145-175kDa

Calculated MW

44kDa/69kDa/77kDa/134kDa

Category

SMab Recombinant Monoclonal Antibody

Applications

WB,IF/ICC,ELISA

Cross-Reactivity

Human,Mouse

CloneNo number

ARC61438_ARC60682

Background

The protein encoded by this gene is a transmembrane glycoprotein that is a member of the protein kinase superfamily. This protein is a receptor for members of the epidermal growth factor family. EGFR is a cell surface protein that binds to epidermal growth factor. Binding of the protein to a ligand induces receptor dimerization and tyrosine autophosphorylation and leads to cell proliferation. Mutations in this gene are associated with lung cancer.

Recommended Dilutions

WB	1:500 - 1:2000
IF/ICC	1:50 - 1:200

Immunogen Information

Gene ID

1956

Swiss Prot

P00533

Immunogen

Recombinant protein of human EGFR.

Synonyms

EGFR; ERBB; ERBB1; HER1; NISBD2; PIG61; mENA; epidermal growth factor receptor

Contact



www.abclonal.com

Product Information

Source

Rabbit

Isotype

IgG

Purification

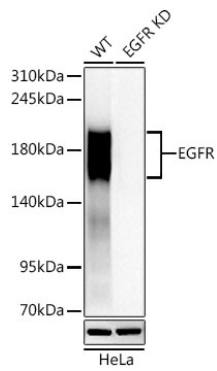
Affinity purification

Storage

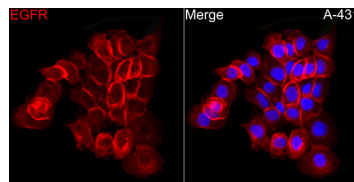
Store at -20°C. Avoid freeze / thaw cycles.

Buffer: PBS with 0.05% proclin300,0.05% BSA,50% glycerol,pH7.3.

Validation Data



Western blot analysis of extracts from normal (control) and EGFR knockdown (KD) HeLa cells, using [KD Validated] EGFR Rabbit PolymAb® (A24388) at 1:1000 dilution. Secondary antibody: HRP Goat Anti-Rabbit IgG (H+L) (AS014) at 1:10000 dilution. Lysates/proteins: 25µg per lane. Blocking buffer: 3% nonfat dry milk in TBST. Detection: ECL Basic Kit (RM00020). Exposure time: 45s.



Immunofluorescence analysis of A-431 using [KD Validated] EGFR Rabbit PolymAb® (A24388) at dilution of 1:100 (40x lens). Blue: DAPI for nuclear staining.