

A24009

Leader in Biomolecular Solutions for Life Science



AKT2 Rabbit mAb

Catalog No.: A24009

Recombinant

1 Publications

Basic Information

Observed MW

60kDa

Calculated MW

56kDa

Category

SMab Recombinant Monoclonal Antibody

Applications

WB, IHC-P, IF/ICC, ELISA

Cross-Reactivity

Human, Mouse, Rat

CloneNo number

ARC62648

Background

This gene is a putative oncogene encoding a protein belonging to a subfamily of serine/threonine kinases containing SH2-like (Src homology 2-like) domains, which is involved in signaling pathways. The gene serves as an oncogene in the tumorigenesis of cancer cells. For example, its overexpression contributes to the malignant phenotype of a subset of human ductal pancreatic cancers. The encoded protein is a general protein kinase capable of phosphorylating several known proteins, and has also been implicated in insulin signaling.

Recommended Dilutions

| | |
|--------|-----------------|
| WB | 1:1000 - 1:5000 |
| IHC-P | 1:50 - 1:200 |
| IF/ICC | 1:50 - 1:200 |

Immunogen Information

Gene ID

208

Swiss Prot

P31751

Immunogen

A synthetic peptide corresponding to a sequence within amino acids 390-490 of human AKT2.

Synonyms

PKBB; PRKBB; HIHGHH; PKBBETA; RAC-BETA; AKT2

Contact



www.abclonal.com

Product Information

Source

Rabbit

Isotype

IgG

Purification

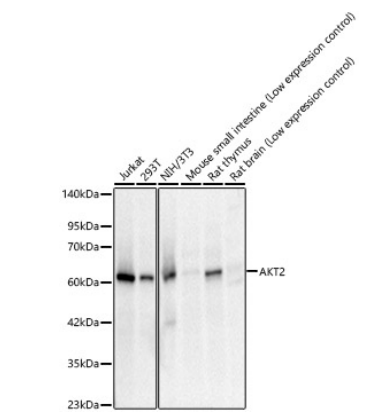
Affinity purification

Storage

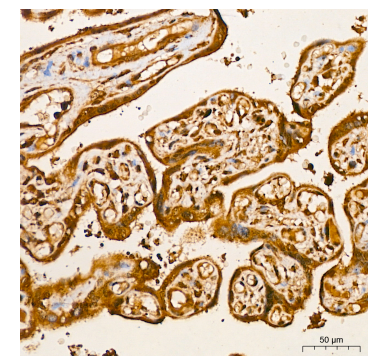
Store at -20°C. Avoid freeze / thaw cycles.

Buffer: PBS with 0.05% proclin300, 0.05% BSA, 50% glycerol, pH7.3.

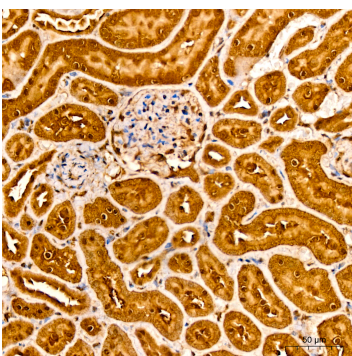
Validation Data



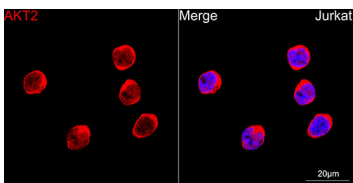
Western blot analysis of various lysates, using AKT2 Rabbit mAb (A24009) at 1:3000 dilution. Secondary antibody: HRP Goat Anti-Rabbit IgG (H+L) (A5014) at 1:10000 dilution. Lysates/proteins: 25ug per lane. Blocking buffer: 3% nonfat dry milk in TBST. Detection: ECL Basic Kit (RM00020). Exposure time: 30s.



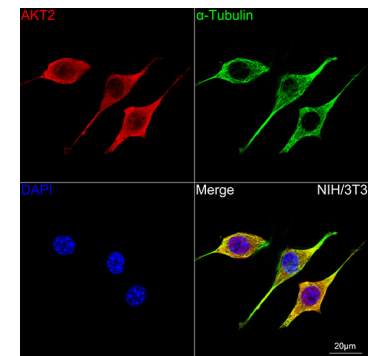
Immunohistochemistry analysis of paraffin-embedded human placenta using AKT2 Rabbit mAb (A24009) at dilution of 1:200 (40x lens). Perform high pressure antigen retrieval with 10 mM citrate buffer pH 6.0 before commencing with IHC staining protocol.



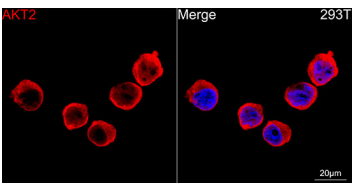
Immunohistochemistry analysis of paraffin-embedded rat kidney using AKT2 Rabbit mAb (A24009) at dilution of 1:200 (40x lens). Perform high pressure antigen retrieval with 10 mM citrate buffer pH 6.0 before commencing with IHC staining protocol.



Confocal imaging of Jurkat cells using AKT2 Rabbit mAb (A24009, at dilution of 1:200) (Red). DAPI was used for nuclear staining (blue). Objective: 100x.



Confocal imaging of NIH/3T3 cells using AKT2 Rabbit mAb (A24009, at dilution of 1:200) (Red). The cells were counterstained with α -Tubulin Mouse mAb (AC012, dilution 1:400) (Green). DAPI was used for nuclear staining (blue). Objective: 100x.



Confocal imaging of 293T cells using AKT2 Rabbit mAb (A24009, at dilution of 1:200) (Red). DAPI was used for nuclear staining (blue). Objective: 100x.