

A23775

Leader in Biomolecular Solutions for Life Science



## CD305/LAIR1 Rabbit mAb

Catalog No.: A23775

Recombinant

### Basic Information

#### Observed MW

40-50kDa

#### Calculated MW

23kDa/29kDa/31kDa

#### Category

SMab Recombinant Monoclonal Antibody

#### Applications

WB,FC,ELISA

#### Cross-Reactivity

Human

#### CloneNo number

ARC61434

### Background

The protein encoded by this gene is an inhibitory receptor found on peripheral mononuclear cells, including natural killer cells, T cells, and B cells. Inhibitory receptors regulate the immune response to prevent lysis of cells recognized as self. The gene is a member of both the immunoglobulin superfamily and the leukocyte-associated inhibitory receptor family. The gene maps to a region of 19q13.4 called the leukocyte receptor cluster, which contains at least 29 genes encoding leukocyte-expressed receptors of the immunoglobulin superfamily. The encoded protein has been identified as an anchor for tyrosine phosphatase SHP-1, and may induce cell death in myeloid leukemias. Alternative splicing results in multiple transcript variants.

### Recommended Dilutions

WB	1:1000 - 1:5000
FC	1:100 - 1:500

### Immunogen Information

#### Gene ID

3903

#### Swiss Prot

Q6GTX8

#### Immunogen

Recombinant fusion protein containing a sequence corresponding to amino acids 22-163 of human CD305/LAIR1(NP\_002278.2).

#### Synonyms

LAIR1; CD305; LAIR-1; leukocyte-associated immunoglobulin-like receptor 1; CD305/LAIR1

### Contact



[www.abclonal.com](http://www.abclonal.com)

### Product Information

#### Source

Rabbit

#### Isotype

IgG

#### Purification

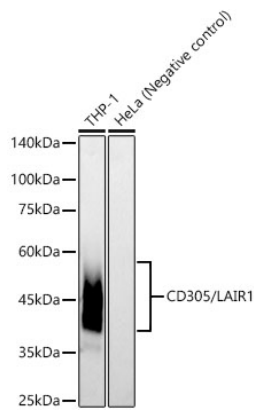
Affinity purification

#### Storage

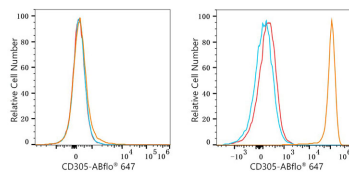
Store at -20°C. Avoid freeze / thaw cycles.

Buffer: PBS with 0.05% proclin300,0.05% BSA,50% glycerol,pH7.3.

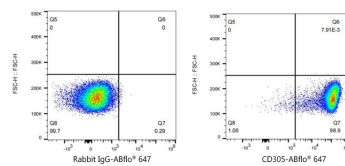
## Validation Data



Western blot analysis of various lysates, using CD305/LAIR1 Rabbit mAb (A23775) at 1:2000 dilution.  
 Secondary antibody: HRP Goat Anti-Rabbit IgG (H+L) (A5014) at 1:10000 dilution.  
 Lysates/proteins: 25µg per lane.  
 Blocking buffer: 3% nonfat dry milk in TBST.  
 Detection: ECL Basic Kit (RM00020).  
 Exposure time: 30s.



Flow cytometry:  $1 \times 10^6$  K-562 cells (negative control, left) and THP-1 cells (right) were surface-stained with ABflo® 647 Rabbit anti-CD305/LAIR1 Rabbit mAb (A23775, 2 µg/mL, orange line) or ABflo® 647 Rabbit IgG isotype control (A22070, 2 µg/mL, blue line). Non-fluorescently stained cells were used as blank control (red line).



Flow cytometry:  $1 \times 10^6$  THP-1 cells were surface-stained with ABflo® 647 Rabbit IgG isotype control (A22070, 2 µg/mL, left) or CD305/LAIR1 Rabbit mAb (A23775, 2 µg/mL, right).