

A23770

Leader in Biomolecular Solutions for Life Science



## PKC alpha Rabbit PolymAb®

Catalog No.: A23770

### Basic Information

**Observed MW**

77kDa

**Calculated MW**

77kDa

**Category**

SMab Recombinant Monoclonal Antibody

**Applications**

WB, ELISA

**Cross-Reactivity**

Human, Mouse, Rat

**CloneNo number**

ARC58845\_ARC58853

### Background

Protein kinase C (PKC) is a family of serine- and threonine-specific protein kinases that can be activated by calcium and the second messenger diacylglycerol. PKC family members phosphorylate a wide variety of protein targets and are known to be involved in diverse cellular signaling pathways. PKC family members also serve as major receptors for phorbol esters, a class of tumor promoters. Each member of the PKC family has a specific expression profile and is believed to play a distinct role in cells. The protein encoded by this gene is one of the PKC family members. This kinase has been reported to play roles in many different cellular processes, such as cell adhesion, cell transformation, cell cycle checkpoint, and cell volume control. Knockout studies in mice suggest that this kinase may be a fundamental regulator of cardiac contractility and Ca(2+) handling in myocytes.

### Recommended Dilutions

WB 1:1000 - 1:5000

### Immunogen Information

**Gene ID**

5578

**Swiss Prot**

P17252

**Immunogen**

Recombinant protein of human PKC alpha.

**Synonyms**

AAG6; PKCA; PRKACA; PKCI+/-; PKCalpha; PKC-alpha

### Contact



[www.abclonal.com](http://www.abclonal.com)

### Product Information

**Source**

Rabbit

**Isotype**

IgG

**Purification**

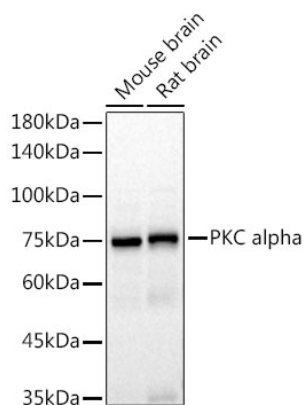
Affinity purification

**Storage**

Store at -20°C. Avoid freeze / thaw cycles.

Buffer: PBS with 0.05% proclin300, 0.05% BSA, 50% glycerol, pH7.3.

## Validation Data



Western blot analysis of various lysates, using PKC alpha Rabbit PolymAb® (A23770) at 1:1000 dilution.  
Secondary antibody: HRP Goat Anti-Rabbit IgG (H+L) (A5014) at 1:10000 dilution.  
Lysates/proteins: 25µg per lane.  
Blocking buffer: 3% nonfat dry milk in TBST.  
Detection: ECL Basic Kit (RM00020).  
Exposure time: 10s.