

A23712

Leader in Biomolecular Solutions for Life Science



PE Rabbit anti-Human CD25 mAb

Catalog No.: A23712

Basic Information

Observed MW

Refer to figures

Calculated MW

31kDa

Category

SMab Recombinant Monoclonal Antibody

Applications

FC

Cross-Reactivity

Human

CloneNo number

ARC58046-PE

Conjugate

PE. Ex:565nm. Em:574nm.

Background

The interleukin 2 (IL2) receptor alpha (IL2RA) and beta (IL2RB) chains, together with the common gamma chain (IL2RG), constitute the high-affinity IL2 receptor. Homodimeric alpha chains (IL2RA) result in low-affinity receptor, while homodimeric beta (IL2RB) chains produce a medium-affinity receptor. Normally an integral-membrane protein, soluble IL2RA has been isolated and determined to result from extracellular proteolysis. Alternately-spliced IL2RA mRNAs have been isolated, but the significance of each is presently unknown. Mutations in this gene are associated with interleukin 2 receptor alpha deficiency. Patients with severe Coronavirus Disease 2019 (COVID-19), the disease caused by the novel severe acute respiratory syndrome coronavirus 2 (SARS-CoV-2), have significantly elevated levels of IL2R in their plasma. Similarly, serum IL-2R levels are found to be elevated in patients with different types of carcinomas. Certain IL2RA and IL2RB gene polymorphisms have been associated with lung cancer risk.

Recommended Dilutions

FC 5 μ l per 10^6 cells in
100 μ l volume

Immunogen Information

Gene ID

3559

Swiss Prot

P01589

Immunogen

Recombinant fusion protein containing a sequence corresponding to amino acids 22-213 of human CD25 (NP_000408.1).

Synonyms

p55; CD25; IL2R; IMD41; TCGFR; IDDM10

Contact



www.abclonal.com

Product Information

Source

Rabbit

Isotype

IgG

Purification

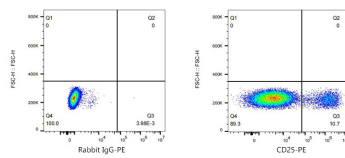
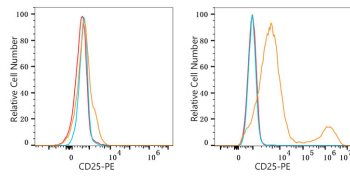
Affinity purification

Storage

Store at 2-8°C. Avoid freeze.

Buffer: PBS with 0.03% proclin300, 0.2% BSA, pH7.3.

Validation Data



Flow cytometry: 1×10^6 293T cells(negative control,left) and 293T(Transfection,right) cells were surface-stained with PE Rabbit anti-Human CD25 mAb(A23712,5 μ l/Test,orange line) or PE Rabbit IgG isotype control (5 μ l/Test,blue line).Non-fluorescently stained cells was used as blank control (red line).

Flow cytometry: 1×10^6 293T(Transfection) cells were surface-stained with PE Rabbit IgG isotype control (5 μ l/Test,left) or PE Rabbit anti-Human CD25 mAb(A23712,5 μ l/Test,right).