

A23708

Leader in Biomolecular Solutions for Life Science



ABflo® 647 Rabbit anti-Mouse CD45 mAb

Catalog No.: A23708

Basic Information

Observed MW

Refer to figures

Calculated MW

130kDa/140kDa/144kDa

Category

SMab Recombinant Monoclonal Antibody

Applications

FC

Cross-Reactivity

Mouse

CloneNo number

ARC60962-ABf647

Conjugate

ABflo® 647. Ex:648nm. Em:664nm.

Background

Enables several functions, including heparan sulfate proteoglycan binding activity; heparin binding activity; and protein tyrosine phosphatase activity. Involved in several processes, including lymphocyte differentiation; positive regulation of macromolecule metabolic process; and regulation of signal transduction. Acts upstream of or within several processes, including lymphocyte differentiation; positive regulation of lymphocyte activation; and regulation of protein phosphorylation. Located in external side of plasma membrane; focal adhesion; and membrane raft. Is expressed in several structures, including 3rd branchial arch; alimentary system; cardiovascular system; hemolymphoid system; and placenta. Used to study systemic lupus erythematosus. Human ortholog(s) of this gene implicated in hepatitis C; multiple sclerosis; severe combined immunodeficiency; and severe combined immunodeficiency, autosomal recessive, T cell-negative, B cell-positive, Nk cell-positive. Orthologous to human PTPRC (protein tyrosine phosphatase receptor type C).

Recommended Dilutions

FC 5 µl per 10⁶ cells in
100 µl volume

Immunogen Information

Gene ID

19264

Swiss Prot

P06800

Immunogen

Recombinant fusion protein containing a sequence corresponding to amino acids 26-566 of mouse CD45 (NP_001104786.2).

Synonyms

loc; B220; Cd45; L-CA; Ly-5; T200; CD45R; Lyt-4

Contact



www.abclonal.com

Product Information

Source

Rabbit

Isotype

IgG

Purification

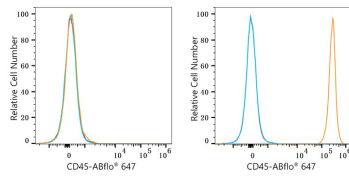
Affinity purification

Storage

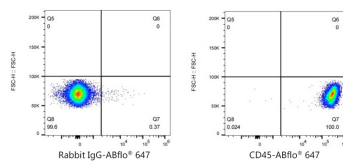
Store at 2-8°C. Avoid freeze.

Buffer: PBS with 0.03% proclin300, 0.2% BSA, pH7.3.

Validation Data



Flow cytometry: 1X10⁶ C2C12 cells (negative control, left) and C57BL/6 mouse Splenocytes (right) were surface-stained with ABflo® 647 Rabbit anti-Mouse CD45 mAb (A23708, 5 µl/Test, orange line) or ABflo® 647 Rabbit IgG isotype control (A22070, 5 µl/Test, blue line). Non-fluorescently stained cells were used as blank control (red line).



Flow cytometry: 1X10⁶ C57BL/6 mouse Splenocytes were surface-stained with ABflo® 647 Rabbit IgG isotype control (A22070, 5 µl/Test, left) or ABflo® 647 Rabbit anti-Mouse CD45 mAb (A23708, 5 µl/Test, right).