

A23678

Leader in Biomolecular Solutions for Life Science



# LDHA Rabbit pAb

Catalog No.: A23678

## Basic Information

### Observed MW

37kDa/

### Calculated MW

37kDa

### Category

Polyclonal Antibody

### Applications

WB, ELISA

### Cross-Reactivity

Human, Mouse, Rat

## Background

The protein encoded by this gene catalyzes the conversion of L-lactate and NAD to pyruvate and NADH in the final step of anaerobic glycolysis. The protein is found predominantly in muscle tissue and belongs to the lactate dehydrogenase family. Mutations in this gene have been linked to exertional myoglobinuria. Multiple transcript variants encoding different isoforms have been found for this gene. The human genome contains several non-transcribed pseudogenes of this gene.

## Recommended Dilutions

WB 1:500 - 1:1000

## Immunogen Information

### Gene ID

3939

### Swiss Prot

P00338

### Immunogen

Recombinant protein of human LDHA(NP\_005557.1).

### Synonyms

LDHM; GSD11; PIG19; HEL-S-133P; [KD Validated] LDHA

## Contact



[www.abclonal.com](http://www.abclonal.com)

## Product Information

### Source

Rabbit

### Isotype

IgG

### Purification

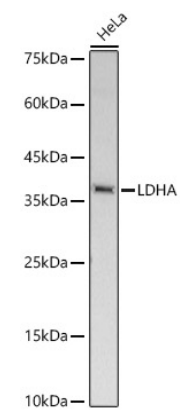
Affinity purification

### Storage

Store at -20°C. Avoid freeze / thaw cycles.

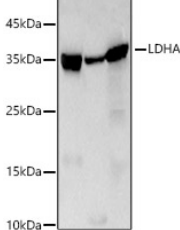
Buffer: PBS with 0.05% proclin300, 50% glycerol, pH7.3.

Validation Data



Western blot analysis of lysates from HeLa cells, using [KD Validated] LDHA Rabbit pAb (A23678) at 1:1000 dilution.  
Secondary antibody: HRP Goat Anti-Rabbit IgG (H+L) (AS014) at 1:10000 dilution.  
Lysates/proteins: 25ug per lane.  
Blocking buffer: 3% nonfat dry milk in TBST.  
Detection: ECL Basic Kit (RM00020).  
Exposure time: 30s.

Western blot analysis of various lysates, using [KD Validated] LDHA Rabbit pAb (A23678) at 1:1000 dilution.  
Secondary antibody: HRP Goat Anti-Rabbit IgG (H+L) (AS014) at 1:10000 dilution.  
Lysates/proteins: 25ug per lane.  
Blocking buffer: 3% nonfat dry milk in TBST.  
Detection: ECL Basic Kit (RM00020).  
Exposure time: 30s.



Western blot analysis of lysates from wild type (WT) and LDHA knockdown (KD) 293T cells using LDHA Rabbit pAb (A23678) at 1:800 dilution.  
Secondary antibody: HRP Goat Anti-Rabbit IgG (H+L)(AS014) at 1:10000 dilution.  
Lysates/proteins: 25 µg per lane.  
Blocking buffer: 3% nonfat dry milk in TBST.  
Detection: ECL Basic Kit (RM00020).  
Exposure time: 30s.

