

A23531

Leader in Biomolecular Solutions for Life Science



INSIG1 Rabbit mAb

Catalog No.: A23531 **Recombinant**

Basic Information

Observed MW

Refer to figures

Calculated MW

30kDa

Category

SMab Recombinant Monoclonal Antibody

Applications

IHC-P,ELISA

Cross-Reactivity

Mouse,Rat

CloneNo number

ARC61103

Background

This gene encodes an endoplasmic reticulum membrane protein that regulates cholesterol metabolism, lipogenesis, and glucose homeostasis. The encoded protein has six transmembrane helices which contain an effector protein binding site. It binds the sterol-sensing domains of sterol regulatory element-binding protein (SREBP) cleavage-activating protein (SCAP) and 3-hydroxy-3-methylglutaryl-coenzyme A reductase (HMG-CoA reductase), and is essential for the sterol-mediated trafficking of these two proteins. It promotes the endoplasmic reticulum retention of SCAP and the ubiquitin-mediated degradation of HMG-CoA reductase. Alternative splicing results in multiple transcript variants.

Recommended Dilutions

IHC-P 1:50 - 1:200

Immunogen Information

Gene ID

3638

Swiss Prot

O15503

Immunogen

Recombinant protein of human INSIG1.

Synonyms

CL6; INSIG1

Contact



www.abclonal.com

Product Information

Source

Rabbit

Isotype

IgG

Purification

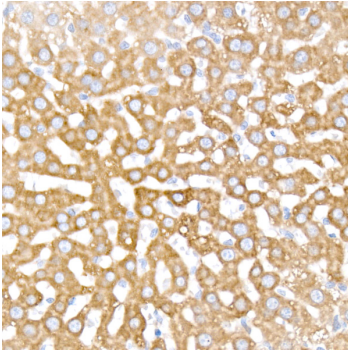
Affinity purification

Storage

Store at -20°C. Avoid freeze / thaw cycles.

Buffer: PBS with 0.05% proclin300,0.05% BSA,50% glycerol,pH7.3.

Validation Data



Immunohistochemistry analysis of paraffin-embedded rat liver using INSIG1 Rabbit mAb (A23531) at dilution of 1:200 (40x lens). Perform high pressure antigen retrieval with 10 mM citrate buffer pH 6.0 before commencing with IHC staining protocol.