

A23510

Leader in Biomolecular Solutions for Life Science



Caveolin-1 Rabbit mAb

Catalog No.: A23510 **Recombinant**

Basic Information

Observed MW

20-25kDa

Calculated MW

20kDa

Category

SMab Recombinant Monoclonal Antibody

Applications

WB,IHC-P,ELISA

Cross-Reactivity

Human,Mouse,Rat

CloneNo number

ARC0322

Background

The scaffolding protein encoded by this gene is the main component of the caveolae plasma membranes found in most cell types. The protein links integrin subunits to the tyrosine kinase FYN, an initiating step in coupling integrins to the Ras-ERK pathway and promoting cell cycle progression. The gene is a tumor suppressor gene candidate and a negative regulator of the Ras-p42/44 mitogen-activated kinase cascade. Caveolin 1 and caveolin 2 are located next to each other on chromosome 7 and express colocalizing proteins that form a stable hetero-oligomeric complex. Mutations in this gene have been associated with Berardinelli-Seip congenital lipodystrophy. Alternatively spliced transcripts encode alpha and beta isoforms of caveolin 1.

Recommended Dilutions

WB	1:500 - 1:1000
IHC-P	1:50 - 1:200

Immunogen Information

Gene ID	Swiss Prot
857	Q03135

Immunogen

Recombinant protein of human Caveolin-1.

Synonyms

CGL3; PPH3; BSCL3; LCCNS; VIP21; MSTP085; Caveolin-1

Contact



www.abclonal.com

Product Information

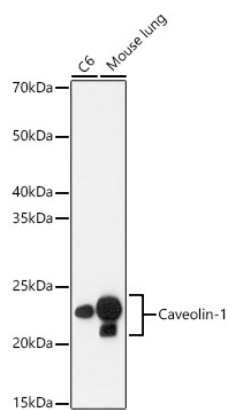
Source	Isotype	Purification
Rabbit	IgG	Affinity purification

Storage

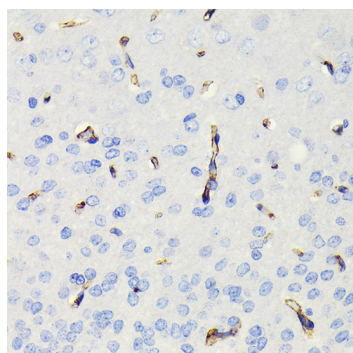
Store at -20°C. Avoid freeze / thaw cycles.

Buffer: PBS with 0.05% proclin300,0.05% BSA,50% glycerol,pH7.3.

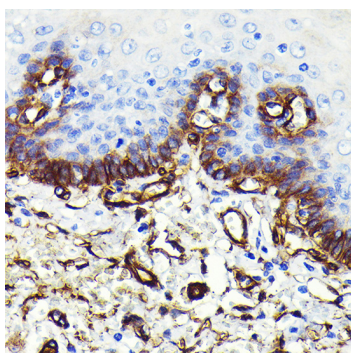
Validation Data



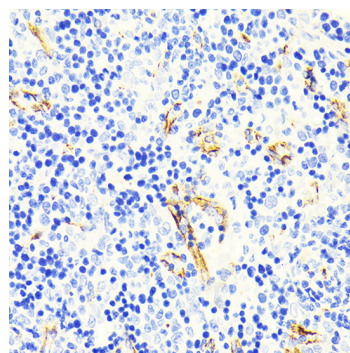
Western blot analysis of various lysates, using Caveolin-1 Rabbit mAb (A23510) at 1:1000 dilution.
Secondary antibody: HRP Goat Anti-Rabbit IgG (H+L) (A5014) at 1:10000 dilution.
Lysates/proteins: 25µg per lane.
Blocking buffer: 3% nonfat dry milk in TBST.
Detection: ECL Basic Kit (RM00020).
Exposure time: 60s.



Immunohistochemistry analysis of Caveolin-1 in paraffin-embedded rat brain using Caveolin-1 Rabbit mAb (A23510) at dilution of 1:100 (40x lens). Perform microwave antigen retrieval with 10 mM PBS buffer pH 7.2 before commencing with IHC staining protocol.



Immunohistochemistry analysis of Caveolin-1 in paraffin-embedded human esophageal using Caveolin-1 Rabbit mAb (A23510) at dilution of 1:100 (40x lens). Perform microwave antigen retrieval with 10 mM PBS buffer pH 7.2 before commencing with IHC staining protocol.



Immunohistochemistry analysis of Caveolin-1 in paraffin-embedded mouse spleen using Caveolin-1 Rabbit mAb (A23510) at dilution of 1:100 (40x lens). Perform microwave antigen retrieval with 10 mM PBS buffer pH 7.2 before commencing with IHC staining protocol.