

A23505

Leader in Biomolecular Solutions for Life Science



## CD31/PECAM1 Rabbit mAb

Catalog No.: A23505

Recombinant

### Basic Information

#### Observed MW

Refer to figures

#### Calculated MW

83kDa

#### Category

SMab Recombinant Monoclonal Antibody

#### Applications

WB,IHC-P,ELISA

#### Cross-Reactivity

Human

#### CloneNo number

ARC0472

### Background

The protein encoded by this gene is found on the surface of platelets, monocytes, neutrophils, and some types of T-cells, and makes up a large portion of endothelial cell intercellular junctions. The encoded protein is a member of the immunoglobulin superfamily and is likely involved in leukocyte migration, angiogenesis, and integrin activation.

### Recommended Dilutions

WB	1:500 - 1:2000
IHC-P	1:50 - 1:200

### Immunogen Information

#### Gene ID

5175

#### Swiss Prot

P16284

#### Immunogen

Recombinant protein of human CD31/PECAM1.

#### Synonyms

CD31; PECA1; GPIIA'; PECAM-1; endoCAM; CD31/EndoCAM; CD31/PECAM1

### Contact



[www.abclonal.com](http://www.abclonal.com)

### Product Information

#### Source

Rabbit

#### Isotype

IgG

#### Purification

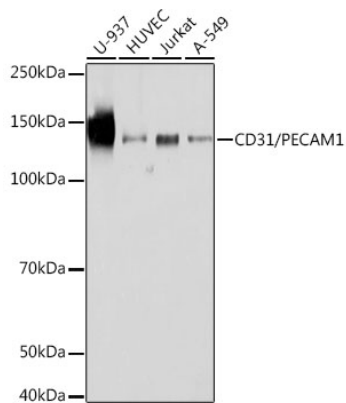
Affinity purification

#### Storage

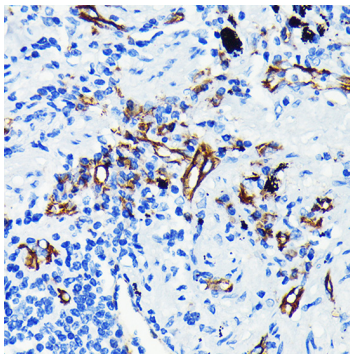
Store at -20°C. Avoid freeze / thaw cycles.

Buffer: PBS with 0.05% proclin300,0.05% BSA,50% glycerol,pH7.3.

## Validation Data



Western blot analysis of various lysates using CD31/PECAM1 Rabbit mAb (A23505) at 1:1000 dilution.  
Secondary antibody: HRP Goat Anti-Rabbit IgG (H+L) (AS014) at 1:10000 dilution.  
Lysates/proteins: 25µg per lane.  
Blocking buffer: 3% nonfat dry milk in TBST.  
Detection: ECL Basic Kit (RM00020).  
Exposure time: 3min.



Immunohistochemistry analysis of CD31/PECAM1 in paraffin-embedded human lung cancer using CD31/PECAM1 Rabbit mAb (A23505) at dilution of 1:100 (40x lens). Perform microwave antigen retrieval with 10 mM PBS buffer pH 7.2 before commencing with IHC staining protocol.