

A23471

Leader in Biomolecular Solutions for Life Science



## MRP1/ABCC1 Rabbit mAb

Catalog No.: A23471 **Recombinant**

### Basic Information

**Observed MW**

150-250kDa

**Calculated MW**

172kDa

**Category**

SMab Recombinant Monoclonal Antibody

**Applications**

WB, ELISA

**Cross-Reactivity**

Human

**CloneNo number**

ARC0734

### Background

The protein encoded by this gene is a member of the superfamily of ATP-binding cassette (ABC) transporters. ABC proteins transport various molecules across extra- and intra-cellular membranes. ABC genes are divided into seven distinct subfamilies (ABC1, MDR/TAP, MRP, ALD, OABP, GCN20, White). This full transporter is a member of the MRP subfamily which is involved in multi-drug resistance. This protein functions as a multispecific organic anion transporter, with oxidized glutathione, cysteinyl leukotrienes, and activated aflatoxin B1 as substrates. This protein also transports glucuronides and sulfate conjugates of steroid hormones and bile salts. Alternatively spliced variants of this gene have been described but their full-length nature is unknown.

### Recommended Dilutions

**WB** 1:500 - 1:1000

### Immunogen Information

**Gene ID**

4363

**Swiss Prot**

P33527

**Immunogen**

Recombinant protein of human MRP1/ABCC1.

**Synonyms**

MRP; ABCC; GS-X; MRP1; ABC29; DFNA77; MRP1/ABCC1

### Contact



[www.abclonal.com](http://www.abclonal.com)

### Product Information

**Source**

Rabbit

**Isotype**

IgG

**Purification**

Affinity purification

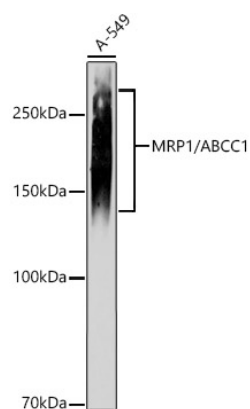
**Storage**

Store at -20°C. Avoid freeze / thaw cycles.

Buffer: PBS with 0.05% proclin300, 0.05% BSA, 50% glycerol, pH 7.3.

## Validation Data

---



Western blot analysis of lysates from A-549 cells, using MRP1/ABCC1 Rabbit mAb (A23471) at 1:1000 dilution.

Secondary antibody: HRP Goat Anti-Rabbit IgG (H+L) (AS014) at 1:10000 dilution.

Lysates/proteins: 25µg per lane.

Blocking buffer: 3% nonfat dry milk in TBST.

Detection: ECL Basic Kit (RM00020).

Exposure time: 90s.