

A23231

Leader in Biomolecular Solutions for Life Science



## PKC alpha Rabbit mAb

Catalog No.: A23231 **Recombinant**

### Basic Information

#### Observed MW

Refer to figures

#### Calculated MW

77kDa

#### Category

SMab Recombinant Monoclonal Antibody

#### Applications

IF/ICC,ELISA

#### Cross-Reactivity

Human

#### CloneNo number

ARC58845

### Background

Protein kinase C (PKC) is a family of serine- and threonine-specific protein kinases that can be activated by calcium and the second messenger diacylglycerol. PKC family members phosphorylate a wide variety of protein targets and are known to be involved in diverse cellular signaling pathways. PKC family members also serve as major receptors for phorbol esters, a class of tumor promoters. Each member of the PKC family has a specific expression profile and is believed to play a distinct role in cells. The protein encoded by this gene is one of the PKC family members. This kinase has been reported to play roles in many different cellular processes, such as cell adhesion, cell transformation, cell cycle checkpoint, and cell volume control. Knockout studies in mice suggest that this kinase may be a fundamental regulator of cardiac contractility and Ca(2+) handling in myocytes.

### Recommended Dilutions

IF/ICC 1:50 - 1:200

### Immunogen Information

#### Gene ID

5578

#### Swiss Prot

P17252

#### Immunogen

Recombinant protein of human PKC alpha.

#### Synonyms

AAG6; PKCA; PRKACA; PKCI+/-; PKCalpha; PKC-alpha

### Contact



[www.abclonal.com](http://www.abclonal.com)

### Product Information

#### Source

Rabbit

#### Isotype

IgG

#### Purification

Affinity purification

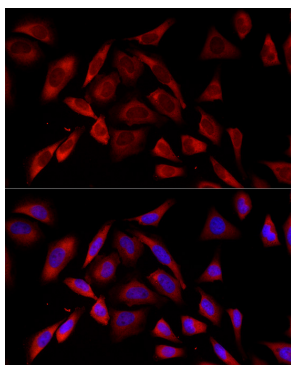
#### Storage

Store at -20°C. Avoid freeze / thaw cycles.

Buffer: PBS with 0.05% proclin300,0.05% BSA,50% glycerol,pH7.3.

## Validation Data

---



Immunofluorescence analysis of HeLa cells using PKC alpha Rabbit mAb (A23231) at dilution of 1:100 (40x lens). Secondary antibody: Cy3 Goat Anti-Rabbit IgG (H+L) (A5007) at 1:500 dilution. Blue: DAPI for nuclear staining.