

A23086

Leader in Biomolecular Solutions for Life Science



DSCR1 Rabbit mAb

Catalog No.: A23086

Recombinant

Basic Information

Observed MW

Refer to figures

Calculated MW

28kDa

Category

SMab Recombinant Monoclonal Antibody

Applications

IHC-P,IF/ICC,ELISA

Cross-Reactivity

Human,Mouse,Rat

CloneNo number

ARC58928

Background

The protein encoded by this gene interacts with calcineurin A and inhibits calcineurin-dependent signaling pathways, possibly affecting central nervous system development. This gene is located in the minimal candidate region for the Down syndrome phenotype, and is overexpressed in the brain of Down syndrome fetuses. Chronic overexpression of this gene may lead to neurofibrillary tangles such as those associated with Alzheimer disease. Alternative splicing results in multiple transcript variants.

Recommended Dilutions

IHC-P	1:50 - 1:200
IF/ICC	1:50 - 1:200

Immunogen Information

Gene ID

1827

Swiss Prot

P53805

Immunogen

Recombinant protein of human DSCR1.

Synonyms

CSP1; DSC1; RCN1; DSCR1; MCIP1; ADAPT78

Contact



www.abclonal.com

Product Information

Source

Rabbit

Isotype

IgG

Purification

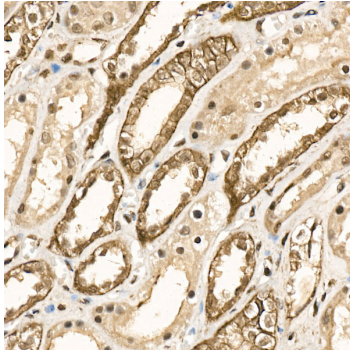
Affinity purification

Storage

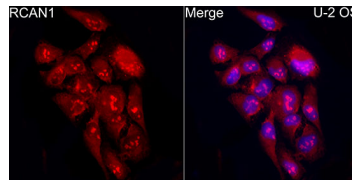
Store at -20°C. Avoid freeze / thaw cycles.

Buffer: PBS with 0.05% proclin300,0.05% BSA,50% glycerol,pH7.3.

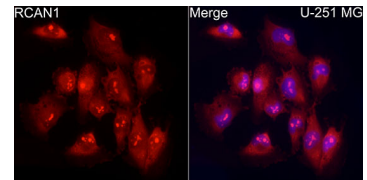
Validation Data



Immunohistochemistry analysis of paraffin-embedded human kidney using DSCR1 Rabbit mAb (A23086) at dilution of 1:200 (40x lens). Perform high pressure antigen retrieval with 10 mM citrate buffer pH 6.0 before commencing with IHC staining protocol.



Immunofluorescence analysis of U-2 OS cells using DSCR1 Rabbit mAb (A23086) at dilution of 1:50 (40x lens). Blue: DAPI for nuclear staining.



Immunofluorescence analysis of U-251MG cells using DSCR1 Rabbit mAb (A23086) at dilution of 1:50 (40x lens). Blue: DAPI for nuclear staining.