

A23058

Leader in Biomolecular Solutions for Life Science



## MEK7 Rabbit pAb

Catalog No.: A23058

### Basic Information

**Observed MW**

47kDa

**Calculated MW**

47kDa

**Category**

Polyclonal Antibody

**Applications**

WB,IF/ICC,ELISA

**Cross-Reactivity**

Human,Rat

### Background

The protein encoded by this gene is a dual specificity protein kinase that belongs to the MAP kinase kinase family. This kinase specifically activates MAPK8/JNK1 and MAPK9/JNK2, and this kinase itself is phosphorylated and activated by MAP kinase kinase kinases including MAP3K1/MEKK1, MAP3K2/MEKK2,MAP3K3/MEKK5, and MAP4K2/GCK. This kinase is involved in the signal transduction mediating the cell responses to proinflammatory cytokines, and environmental stresses. Alternative splicing results in multiple transcript variants.

### Recommended Dilutions

<b>WB</b>	1:100 - 1:500
<b>IF/ICC</b>	1:20 - 1:200

### Immunogen Information

**Gene ID**

5609

**Swiss Prot**

O14733

**Immunogen**

Recombinant protein of human MEK7.

**Synonyms**

MEK; MKK7; JNKK2; MEK 7; MAPKK7; PRKMK7; SAPKK4; SAPKK-4; MEK7

### Contact



[www.abclonal.com](http://www.abclonal.com)

### Product Information

**Source**

Rabbit

**Isotype**

IgG

**Purification**

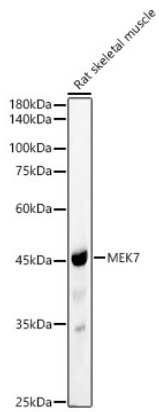
Affinity purification

**Storage**

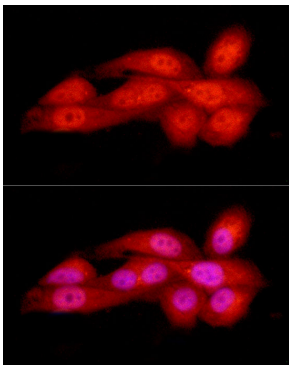
Store at -20°C. Avoid freeze / thaw cycles.

Buffer: PBS with 0.02% sodium azide,50% glycerol,pH7.3.

## Validation Data



Western blot analysis of Rat skeletal muscle, using MEK7 antibody (A23058) at 1:400 dilution.  
Secondary antibody: HRP Goat Anti-Rabbit IgG (H+L) (A5014) at 1:10000 dilution.  
Lysates/proteins: 25µg per lane.  
Blocking buffer: 3% nonfat dry milk in TBST.  
Detection: ECL Basic Kit (RM00020).  
Exposure time: 90s.



Immunofluorescence analysis of PC-3 cells using MEK7 Rabbit pAb (A23058) at dilution of 1:20 (40x lens). Blue: DAPI for nuclear staining.