

A23023

Leader in Biomolecular Solutions for Life Science



## CD163 Rabbit pAb

Catalog No.: A23023

### Basic Information

#### Observed MW

160kDa

#### Calculated MW

125kDa

#### Category

Polyclonal Antibody

#### Applications

WB, IF/ICC, ELISA

#### Cross-Reactivity

Human, Mouse, Rat

### Background

The protein encoded by this gene is a member of the scavenger receptor cysteine-rich (SRCR) superfamily, and is exclusively expressed in monocytes and macrophages. It functions as an acute phase-regulated receptor involved in the clearance and endocytosis of hemoglobin/haptoglobin complexes by macrophages, and may thereby protect tissues from free hemoglobin-mediated oxidative damage. This protein may also function as an innate immune sensor for bacteria and inducer of local inflammation. Alternatively spliced transcript variants encoding different isoforms have been described for this gene.

### Recommended Dilutions

WB 1:500 - 1:1000

IF/ICC 1:50 - 1:200

### Immunogen Information

#### Gene ID

9332

#### Swiss Prot

Q86VB7

#### Immunogen

A synthetic peptide corresponding to a sequence within amino acids 42-261 of human CD163 (NP\_004235.4?).

#### Synonyms

M130; MM130; SCAR11; CD163

### Contact



[www.abclonal.com](http://www.abclonal.com)

### Product Information

#### Source

Rabbit

#### Isotype

IgG

#### Purification

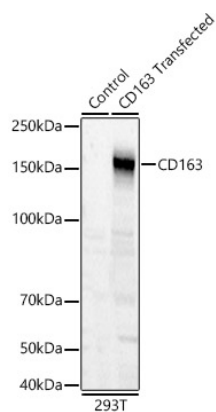
Affinity purification

#### Storage

Store at -20°C. Avoid freeze / thaw cycles.

Buffer: PBS with 0.05% proclin300, 50% glycerol, pH7.3.

## Validation Data



Western blot analysis of lysates from wild type (WT) and 293T cells transfected with CD63 using CD163 Rabbit pAb (A23023) at 1:700 dilution.  
Secondary antibody: HRP Goat Anti-Rabbit IgG (H+L) (AS014) at 1:10000 dilution.  
Lysates/proteins: 25µg per lane.  
Blocking buffer: 3% nonfat dry milk in TBST.  
Detection: ECL Basic Kit (RM00020).  
Exposure time: 1s.