

A22717

Leader in Biomolecular Solutions for Life Science



## ERK1/2 Rabbit mAb

Catalog No.: A22717 **Recombinant**

### Basic Information

**Observed MW**

42/44kDa

**Calculated MW**

42kDa/44kDa

**Category**

SMab Recombinant Monoclonal Antibody

**Applications**

WB,IF/ICC,ELISA

**Cross-Reactivity**

Human,Mouse,Rat

**CloneNo number**

ARC57147

### Background

This gene encodes a member of the MAP kinase family. MAP kinases, also known as extracellular signal-regulated kinases (ERKs), act as an integration point for multiple biochemical signals, and are involved in a wide variety of cellular processes such as proliferation, differentiation, transcription regulation and development. The activation of this kinase requires its phosphorylation by upstream kinases. Upon activation, this kinase translocates to the nucleus of the stimulated cells, where it phosphorylates nuclear targets. One study also suggests that this protein acts as a transcriptional repressor independent of its kinase activity. The encoded protein has been identified as a moonlighting protein based on its ability to perform mechanistically distinct functions. Two alternatively spliced transcript variants encoding the same protein, but differing in the UTRs, have been reported for this gene.

### Recommended Dilutions

**WB** 1:10000 - 1:80000

**IF/ICC** 1:500 - 1:1000

### Immunogen Information

**Gene ID**

5594/ 5595

**Swiss Prot**

P28482/P27361

**Immunogen**

A synthesized peptide derived from human ERK1/2.

**Synonyms**

ERK; ERK-2; ERK2; ERT1; MAPK2; P42MAPK; PRKM1; PRKM2; p38; p40; p41; p41mapk; p42-MAPK; 5594/5595; ERK1/2

### Contact



[www.abclonal.com](http://www.abclonal.com)

### Product Information

**Source**

Rabbit

**Isotype**

IgG

**Purification**

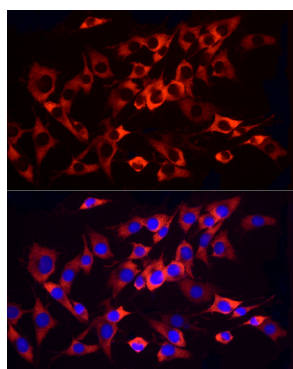
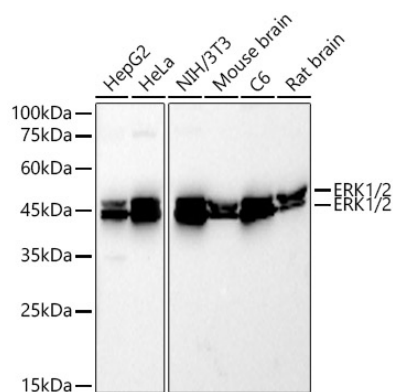
Affinity purification

**Storage**

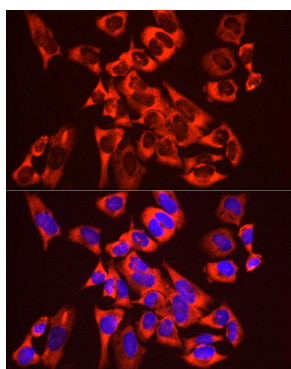
Store at -20°C. Avoid freeze / thaw cycles.

Buffer: PBS with 0.05% proclin300,0.05% BSA,50% glycerol,pH7.3.

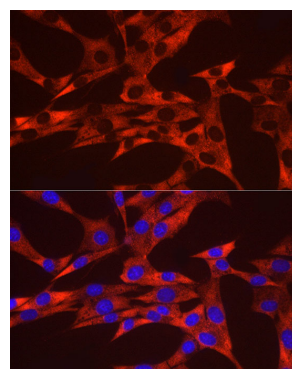
## Validation Data



Immunofluorescence analysis of C6 cells using ERK1/2 Rabbit mAb (A22717) at dilution of 1:1000 (40x lens). Secondary antibody: Cy3 Goat Anti-Rabbit IgG (H+L) (AS007) at 1:500 dilution. Blue: DAPI for nuclear staining.



Immunofluorescence analysis of HeLa cells using ERK1/2 Rabbit mAb (A22717) at dilution of 1:1000 (40x lens). Secondary antibody: Cy3 Goat Anti-Rabbit IgG (H+L) (AS007) at 1:500 dilution. Blue: DAPI for nuclear staining.



Immunofluorescence analysis of NIH/3T3 cells using ERK1/2 Rabbit mAb (A22717) at dilution of 1:1000 (40x lens). Secondary antibody: Cy3 Goat Anti-Rabbit IgG (H+L) (AS007) at 1:500 dilution. Blue: DAPI for nuclear staining.