

A22716

Leader in Biomolecular Solutions for Life Science



ERK1/2 Rabbit mAb

Catalog No.: A22716

Recombinant

Basic Information

Observed MW

42kDa/44kDa

Calculated MW

42kDa/44kDa

Category

SMab Recombinant Monoclonal Antibody

Applications

WB,IP,ELISA

Cross-Reactivity

Human,Mouse,Rat

CloneNo number

ARC57145

Background

This gene encodes a member of the MAP kinase family. MAP kinases, also known as extracellular signal-regulated kinases (ERKs), act as an integration point for multiple biochemical signals, and are involved in a wide variety of cellular processes such as proliferation, differentiation, transcription regulation and development. The activation of this kinase requires its phosphorylation by upstream kinases. Upon activation, this kinase translocates to the nucleus of the stimulated cells, where it phosphorylates nuclear targets. One study also suggests that this protein acts as a transcriptional repressor independent of its kinase activity. The encoded protein has been identified as a moonlighting protein based on its ability to perform mechanistically distinct functions. Two alternatively spliced transcript variants encoding the same protein, but differing in the UTRs, have been reported for this gene.

Recommended Dilutions

WB 1:10000 - 1:70000

IP 0.5µg-4µg antibody for
200µg-400µg extracts of
whole cells

Immunogen Information

Gene ID

5594/ 5595

Swiss Prot

P28482/P27361

Immunogen

A synthesized peptide derived from human ERK1/2.

Synonyms

ERK; ERK-2; ERK2; ERT1; MAPK2; P42MAPK; PRKM1; PRKM2; p38; p40; p41; p41mapk; p42-MAPK; 5594/5595; ERK1/2

Contact



www.abclonal.com

Product Information

Source

Rabbit

Isotype

IgG

Purification

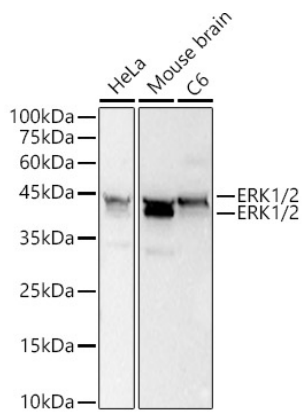
Affinity purification

Storage

Store at -20°C. Avoid freeze / thaw cycles.

Buffer: PBS with 0.05% proclin300,0.05% BSA,50% glycerol,pH7.3.

Validation Data



Immunoprecipitation analysis of 300 µg extracts of HeLa cells using 3 µg ERK1/2 antibody (A22716). Western blot was performed from the immunoprecipitate using ERK1/2 antibody (A22716) at a dilution of 1:70000.

