

A22709

Leader in Biomolecular Solutions for Life Science



## HER2/ErbB2 Rabbit mAb

Catalog No.: A22709

Recombinant

### Basic Information

#### Observed MW

Refer to figures

#### Calculated MW

138kDa

#### Category

SMab Recombinant Monoclonal Antibody

#### Applications

IHC-P, ELISA

#### Cross-Reactivity

Human

#### CloneNo number

ARC57238

### Background

This gene encodes a member of the epidermal growth factor (EGF) receptor family of receptor tyrosine kinases. This protein has no ligand binding domain of its own and therefore cannot bind growth factors. However, it does bind tightly to other ligand-bound EGF receptor family members to form a heterodimer, stabilizing ligand binding and enhancing kinase-mediated activation of downstream signalling pathways, such as those involving mitogen-activated protein kinase and phosphatidylinositol-3 kinase. Allelic variations at amino acid positions 654 and 655 of isoform a (positions 624 and 625 of isoform b) have been reported, with the most common allele, Ile654/Ile655, shown here. Amplification and/or overexpression of this gene has been reported in numerous cancers, including breast and ovarian tumors. Alternative splicing results in several additional transcript variants, some encoding different isoforms and others that have not been fully characterized.

### Recommended Dilutions

IHC-P 1:500 - 1:1000

### Immunogen Information

#### Gene ID

2064

#### Swiss Prot

P04626

#### Immunogen

Recombinant protein of human HER2/ErbB2.

#### Synonyms

NEU; NGL; HER2; TKR1; CD340; HER-2; VSCN2; MLN 19; MLN-19; c-ERB2; c-ERB-2; HER-2/neu; p185(erbB2); HER2/ErbB2

### Contact



[www.abclonal.com](http://www.abclonal.com)

### Product Information

#### Source

Rabbit

#### Isotype

IgG

#### Purification

Affinity purification

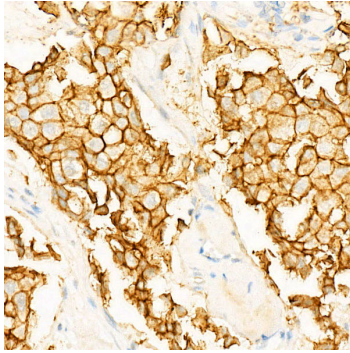
#### Storage

Store at -20°C. Avoid freeze / thaw cycles.

Buffer: PBS with 0.05% proclin300, 0.05% BSA, 50% glycerol, pH7.3.

## Validation Data

---



Immunohistochemistry analysis of HER2/ErbB2 in paraffin-embedded human breast cancer using HER2/ErbB2 Rabbit mAb (A22709) at dilution of 1:800 (40x lens). Perform high pressure antigen retrieval with 10 mM citrate buffer pH 6.0 before commencing with IHC staining protocol.