

A22652

Leader in Biomolecular Solutions for Life Science



MSH6抗体试剂（免疫组织化学）

Catalog No.: A22652

Basic Information

Observed MW

Calculated MW

153kDa

Category

SMab Recombinant Monoclonal Antibody

Applications

IHC-P

Cross-Reactivity

Human

CloneNo number

ARC57727（鄂汉械备20230536号）

Background

This gene encodes a member of the DNA mismatch repair MutS family. In E. coli, the MutS protein helps in the recognition of mismatched nucleotides prior to their repair. A highly conserved region of approximately 150 aa, called the Walker-A adenine nucleotide binding motif, exists in MutS homologs. The encoded protein heterodimerizes with MSH2 to form a mismatch recognition complex that functions as a bidirectional molecular switch that exchanges ADP and ATP as DNA mismatches are bound and dissociated. Mutations in this gene may be associated with hereditary nonpolyposis colon cancer, colorectal cancer, and endometrial cancer. Transcripts variants encoding different isoforms have been described.

Recommended Dilutions

IHC-P 1:100 - 1:500

Immunogen Information

Gene ID

2956

Swiss Prot

P52701

Immunogen

A synthetic peptide corresponding to a sequence within amino acids 1-100 of human MSH6 (NP_000170.1).

Synonyms

GTBP; HSAP; p160; GTMBP; MSH-6; HNPCC5; LYNCH5; MMRCS3; H6

Contact



www.abclonal.com

Product Information

Source

Rabbit

Isotype

IgG

Purification

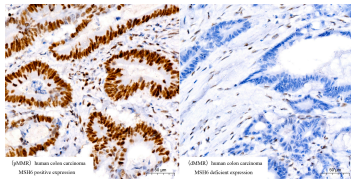
Affinity purification

Storage

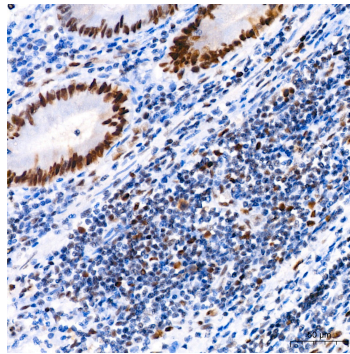
Store at -20°C. Avoid freeze / thaw cycles.

Buffer: PBS with 0.05% proclin300, 0.05% BSA, 50% glycerol, pH7.3.

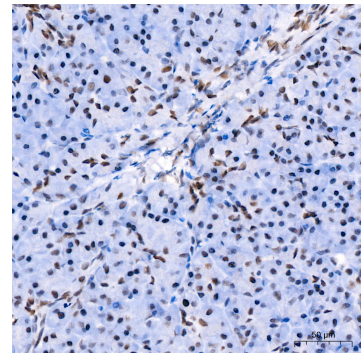
Validation Data



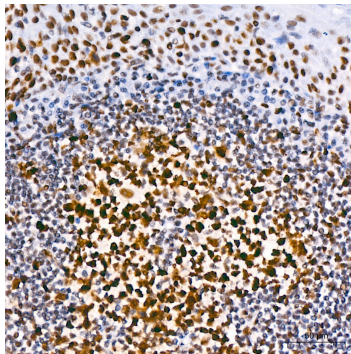
Immunohistochemistry analysis of MSH6 in paraffin-embedded Human colon carcinoma tissue using [KO Validated] MSH6 Rabbit mAb (A22652) at a dilution of 1:400 (40x lens). High pressure antigen retrieval was performed with 0.01 M Tris-EDTA buffer (pH 9.0) prior to IHC staining.



Immunohistochemistry analysis of MSH6 in paraffin-embedded Human appendix tissue using [KO Validated] MSH6 Rabbit mAb (A22652) at a dilution of 1:400 (40x lens). High pressure antigen retrieval was performed with 0.01 M Tris-EDTA buffer (pH 9.0) prior to IHC staining.



Immunohistochemistry analysis of MSH6 in paraffin-embedded Human pancreas tissue using [KO Validated] MSH6 Rabbit mAb (A22652) at a dilution of 1:400 (40x lens). High pressure antigen retrieval was performed with 0.01 M Tris-EDTA buffer (pH 9.0) prior to IHC staining.



Immunohistochemistry analysis of MSH6 in paraffin-embedded Human tonsil tissue using [KO Validated] MSH6 Rabbit mAb (A22652) at a dilution of 1:400 (40x lens). High pressure antigen retrieval was performed with 0.01 M Tris-EDTA buffer (pH 9.0) prior to IHC staining.