

A22614

Leader in Biomolecular Solutions for Life Science



SERCA1/ATP2A1 Rabbit mAb

Catalog No.: A22614

Recombinant

Basic Information

Observed MW

Refer to figures

Calculated MW

110kDa

Category

SMab Recombinant Monoclonal Antibody

Applications

WB, IHC-P, ELISA

Cross-Reactivity

Human, Mouse

CloneNo number

ARC58464

Background

This gene encodes one of the SERCA Ca(2+)-ATPases, which are intracellular pumps located in the sarcoplasmic or endoplasmic reticula of muscle cells. This enzyme catalyzes the hydrolysis of ATP coupled with the translocation of calcium from the cytosol to the sarcoplasmic reticulum lumen, and is involved in muscular excitation and contraction. Mutations in this gene cause some autosomal recessive forms of Brody disease, characterized by increasing impairment of muscular relaxation during exercise. Alternative splicing results in three transcript variants encoding different isoforms.

Recommended Dilutions

| | |
|-------|-----------------|
| WB | 1:2000 - 1:6000 |
| IHC-P | 1:100 - 1:500 |

Immunogen Information

| | |
|---------|------------|
| Gene ID | Swiss Prot |
| 487 | 014983 |

Immunogen

A synthetic peptide of human SERCA1/ATP2A1.

Synonyms

ATP2A; SERCA1; SERCA1/ATP2A1

Contact



www.abclonal.com

Product Information

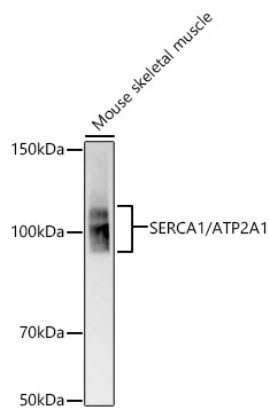
| | | |
|--------|---------|-----------------------|
| Source | Isotype | Purification |
| Rabbit | IgG | Affinity purification |

Storage

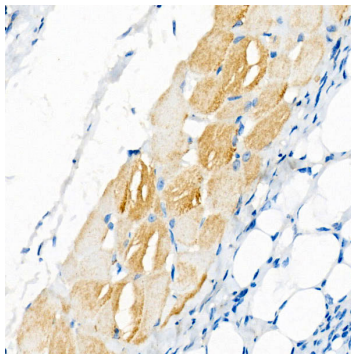
Store at -20°C. Avoid freeze / thaw cycles.

Buffer: PBS with 0.05% proclin300, 0.05% BSA, 50% glycerol, pH7.3.

Validation Data



Western blot analysis of Mouse skeletal muscle, using SERCA1/ATP2A1 antibody (A22614) at 1:5000 dilution.
Secondary antibody: HRP Goat Anti-Rabbit IgG (H+L) (AS014) at 1:10000 dilution.
Lysates/proteins: 25µg per lane.
Blocking buffer: 3% nonfat dry milk in TBST.
Detection: ECL Basic Kit (RM00020).
Exposure time: 90s.



Immunohistochemistry analysis of paraffin-embedded Human skeletal muscle using SERCA1/ATP2A1 Rabbit mAb (A22614) at dilution of 1:500 (40x lens). Perform high pressure antigen retrieval with 10 mM citrate buffer pH 6.0 before commencing with IHC staining protocol.