

A22597

Leader in Biomolecular Solutions for Life Science



## ANKRD1 Rabbit PolymAb®

Catalog No.: A22597

### Basic Information

**Observed MW**

36kDa

**Calculated MW**

36kDa

**Category**

SMab Recombinant Monoclonal Antibody

**Applications**

WB, ELISA

**Cross-Reactivity**

Human, Mouse, Rat

**CloneNo number**

ARC55780\_ARC55783

### Background

The protein encoded by this gene is localized to the nucleus of endothelial cells and is induced by IL-1 and TNF-alpha stimulation. Studies in rat cardiomyocytes suggest that this gene functions as a transcription factor. Interactions between this protein and the sarcomeric proteins myopalladin and titin suggest that it may also be involved in the myofibrillar stretch-sensor system.

### Recommended Dilutions

WB 1:500 - 1:1000

### Immunogen Information

**Gene ID**

27063

**Swiss Prot**

Q15327

**Immunogen**

Recombinant fusion protein containing a sequence corresponding to amino acids 1-130 of human ANKRD1 Rabbit PolymAb® (NP\_055206.2).

**Synonyms**

ALRP; CARP; C-193; CVARP; MCARP; bA320F15.2

### Contact



[www.abclonal.com](http://www.abclonal.com)

### Product Information

**Source**

Rabbit

**Isotype**

IgG

**Purification**

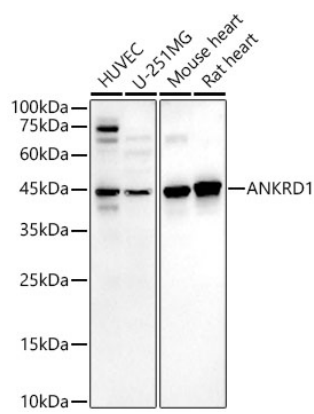
Affinity purification

**Storage**

Store at -20°C. Avoid freeze / thaw cycles.

Buffer: PBS with 0.05% proclin300, 0.05% BSA, 50% glycerol, pH7.3.

Validation Data



Western blot analysis of various lysates, using ANKRD1 Rabbit PolymAb® (A22597) at 1:1000 dilution.  
Secondary antibody: HRP Goat Anti-Rabbit IgG (H+L) (AS014) at 1:10000 dilution.  
Lysates/proteins: 25µg per lane.  
Blocking buffer: 3% nonfat dry milk in TBST.  
Detection: ECL Basic Kit (RM00020).  
Exposure time: 180s.