

A22574

Leader in Biomolecular Solutions for Life Science



## ABflo® 647 Rabbit anti-Human CD150/SLAM mAb

Catalog No.: A22574

### Basic Information

#### Observed MW

Refer to figures

#### Calculated MW

37kDa

#### Category

SMab Recombinant Monoclonal Antibody

#### Applications

FC

#### Cross-Reactivity

Human

#### CloneNo number

ARC56096-ABf647

#### Conjugate

ABflo® 647. Ex:648nm. Em:664nm.

### Background

Enables SH2 domain binding activity and identical protein binding activity. Involved in several processes, including negative regulation of CD40 signaling pathway; negative regulation of cytokine production; and positive regulation of MAPK cascade. Located in extracellular exosome.

### Recommended Dilutions

FC 5 µl per 10<sup>6</sup> cells in  
100 µl volume

### Immunogen Information

#### Gene ID

6504

#### Swiss Prot

Q13291

#### Immunogen

Recombinant fusion protein containing a sequence corresponding to amino acids 21-237 of human CD150 (NP\_003028.1).

#### Synonyms

SLAM; CD150; CDw150

### Contact



[www.abclonal.com](http://www.abclonal.com)

### Product Information

#### Source

Rabbit

#### Isotype

IgG

#### Purification

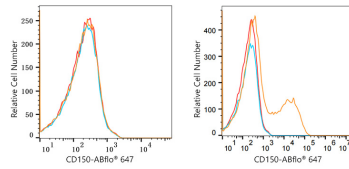
Affinity purification

#### Storage

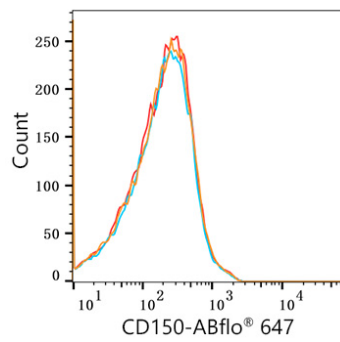
Store at 2-8°C. Avoid freeze.

Buffer: PBS with 0.03% proclin300,0.2% BSA,pH7.3.

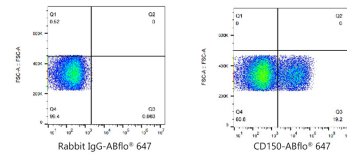
## Validation Data



Flow cytometry:  $1 \times 10^6$  293F cells (negative control, left) and 293F (Transfection, right) cells were surface-stained with ABflo® 647 Rabbit anti-Human CD150/SLAM mAb (A22574, 5  $\mu$ l/Test, orange line) or ABflo® 647 Rabbit IgG isotype control (A22070, 5  $\mu$ l/Test, blue line). Non-fluorescently stained cells were used as blank control (red line).



Flow cytometry:  $1 \times 10^6$  293F cells (negative control) were surface-stained with ABflo® 647 Rabbit anti-Human CD150/SLAM mAb (A22574, 5  $\mu$ l/Test, orange line) or ABflo® 647 Rabbit IgG isotype control (A22070, 5  $\mu$ l/Test, blue line). Non-fluorescently stained 293F cells were used as blank control (red line).



Flow cytometry:  $1 \times 10^6$  293F (Transfection) cells were surface-stained with ABflo® 647 Rabbit IgG isotype control (A22070, 5  $\mu$ l/Test, left) or ABflo® 647 Rabbit anti-Human CD150/SLAM mAb (A22574, 5  $\mu$ l/Test, right).