

ABflo® 488 Rabbit anti-Human CD44 mAb

Catalog No.: A22519

Basic Information

Observed MW

Refer to figures

Calculated MW

82kDa

Category

Primary antibody

Applications

IF/ICC,FC

Cross-Reactivity

Human

CloneNo number

ARC52412-ABf488

Background

The protein encoded by this gene is a cell-surface glycoprotein involved in cell-cell interactions, cell adhesion and migration. It is a receptor for hyaluronic acid (HA) and can also interact with other ligands, such as osteopontin, collagens, and matrix metalloproteinases (MMPs). This protein participates in a wide variety of cellular functions including lymphocyte activation, recirculation and homing, hematopoiesis, and tumor metastasis. Transcripts for this gene undergo complex alternative splicing that results in many functionally distinct isoforms, however, the full length nature of some of these variants has not been determined. Alternative splicing is the basis for the structural and functional diversity of this protein, and may be related to tumor metastasis.

Recommended Dilutions

IF/ICC 1:50 - 1:200

FC 5 µl per 10⁶ cells in 100 µl volume

Immunogen Information

Gene ID

960

Swiss Prot

P16070

Immunogen

Recombinant fusion protein containing a sequence corresponding to amino acids 20-178 of human CD44 (NP_000601.3).

Synonyms

IN; LHR; MC56; MDU2; MDU3; MIC4; Pgp1; CDW44; CSPG8; H-CAM; HCELL; ECM-III; HUTCH-1; HUTCH-I; ECMR-III; Hermes-1

Contact

 | www.abclonal.com

Product Information

Source

Rabbit

Isotype

IgG

Purification

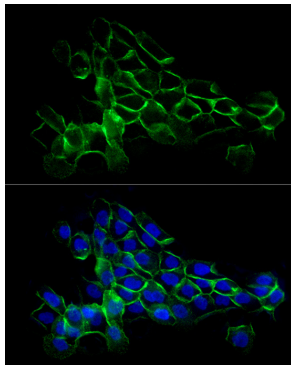
Affinity purification

Storage

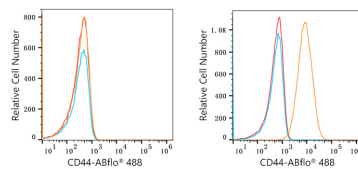
Store at 2-8°C. Avoid freeze.

Buffer: PBS with 0.03% proclin300,0.2% BSA,pH7.3.

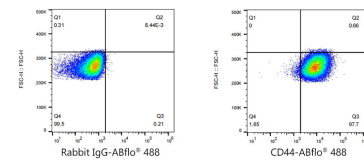
Validation Data



Immunofluorescence analysis of A-431 using ABflo® 488 Rabbit anti-Human CD44 mAb (A22519) at dilution of 1:20 (40x lens). Blue: DAPI for nuclear staining.



Flow cytometry: 1×10^6 Jurkat cells (negative control, left) and HeLa cells (right) were surface-stained with ABflo® 488 Rabbit anti-Human CD44 mAb (A22519, 5 μ l/Test, orange line) or ABflo® 488 Rabbit IgG isotype control (A22069, 5 μ l/Test, blue line). Non-fluorescently stained cells were used as blank control (red line).



Flow cytometry: 1×10^6 HeLa cells were surface-stained with ABflo® 488 Rabbit IgG isotype control (A22069, 5 μ l/Test, left) or ABflo® 488 Rabbit anti-Human CD44 mAb (A22519, 5 μ l/Test, right).