

A22497

Leader in Biomolecular Solutions for Life Science



ABflo® 647 Rabbit anti-Human ERG mAb

Catalog No.: A22497

Basic Information

Observed MW

Calculated MW

54kDa

Category

SMab Recombinant Monoclonal Antibody

Applications

FC (intra)

Cross-Reactivity

Human

CloneNo number

ARC56338-ABf647

Conjugate

ABflo® 647. Ex:648nm. Em:664nm.

Background

This gene encodes a member of the erythroblast transformation-specific (ETS) family of transcriptions factors. All members of this family are key regulators of embryonic development, cell proliferation, differentiation, angiogenesis, inflammation, and apoptosis. The protein encoded by this gene is mainly expressed in the nucleus. It contains an ETS DNA-binding domain and a PNT (pointed) domain which is implicated in the self-association of chimeric oncoproteins. This protein is required for platelet adhesion to the subendothelium, inducing vascular cell remodeling. It also regulates hematopoiesis, and the differentiation and maturation of megakaryocytic cells. This gene is involved in chromosomal translocations, resulting in different fusion gene products, such as TMPSSR2-ERG and NDRG1-ERG in prostate cancer, EWS-ERG in Ewing's sarcoma and FUS-ERG in acute myeloid leukemia. More than two dozens of transcript variants generated from combinatorial usage of three alternative promoters and multiple alternative splicing events have been reported, but the full-length nature of many of these variants has not been determined.

Recommended Dilutions

FC (intra)

5 µl per 10⁶ cells in
100 µl volume

Immunogen Information

Gene ID

2078

Swiss Prot

P11308

Immunogen

A synthetic peptide corresponding to a sequence within amino acids 1-100 of human ERG (NP_891548.1).

Synonyms

p55; erg-3

Contact



www.abclonal.com

Product Information

Source

Rabbit

Isotype

IgG

Purification

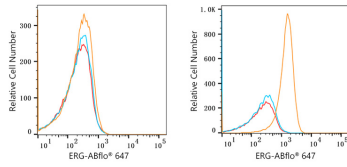
Affinity purification

Storage

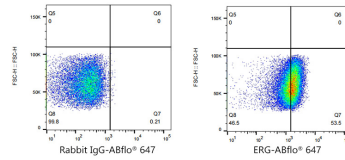
Store at 2-8°C. Avoid freeze.

Buffer: PBS with 0.03% proclin300, 0.2% BSA, pH7.3.

Validation Data



Flow cytometry: 1×10^6 K-562 cells (negative control, left) and MOLT-4 cells (right) were intracellularly-stained with ABflo® 647 Rabbit anti-Human ERG mAb (A22497, 2 $\mu\text{g}/\text{mL}$, orange line) or ABflo® 647 Rabbit Ig isotype control (A22070, 2 $\mu\text{g}/\text{mL}$, blue line). Non-fluorescently stained cells were used as blank control (red line).



Flow cytometry: 1×10^6 MOLT-4 cells were intracellularly-stained with ABflo® 647 Rabbit IgG isotype control (A22070, 5 $\mu\text{l}/\text{Test}$, left) or ABflo® 647 Rabbit anti-Human ERG mAb (A22497, 5 $\mu\text{l}/\text{Test}$, right).