

A22424

Leader in Biomolecular Solutions for Life Science



## [KO Validated] STAT3 Rabbit mAb

Catalog No.: A22424 **KO** **Validated** **Recombinant**

### Basic Information

#### Observed MW

79kDa,86kDa

#### Calculated MW

88kDa

#### Category

SMab Recombinant Monoclonal Antibody

#### Applications

WB,IP,ELISA

#### Cross-Reactivity

Human,Mouse,Rat

#### CloneNo number

ARC0045

### Background

The protein encoded by this gene is a member of the STAT protein family. In response to cytokines and growth factors, STAT family members are phosphorylated by the receptor associated kinases, and then form homo- or heterodimers that translocate to the cell nucleus where they act as transcription activators. This protein is activated through phosphorylation in response to various cytokines and growth factors including IFNs, EGF, IL5, IL6, HGF, LIF and BMP2. This protein mediates the expression of a variety of genes in response to cell stimuli, and thus plays a key role in many cellular processes such as cell growth and apoptosis. The small GTPase Rac1 has been shown to bind and regulate the activity of this protein. PIAS3 protein is a specific inhibitor of this protein. This gene also plays a role in regulating host response to viral and bacterial infections. Mutations in this gene are associated with infantile-onset multisystem autoimmune disease and hyper-immunoglobulin E syndrome.

### Recommended Dilutions

**WB** 1:500 - 1:2000

**IP** 0.5µg-4µg antibody for  
200µg-400µg extracts of  
whole cells

### Immunogen Information

#### Gene ID

6774

#### Swiss Prot

P40763

#### Immunogen

A synthetic peptide corresponding to a sequence within amino acids 1-100 of human STAT3 (P40763).

#### Synonyms

APRF; HIES; ADMIO; ADMIO1; [KO/KD Validated] STAT3

### Contact



[www.abclonal.com](http://www.abclonal.com)

### Product Information

#### Source

Rabbit

#### Isotype

IgG

#### Purification

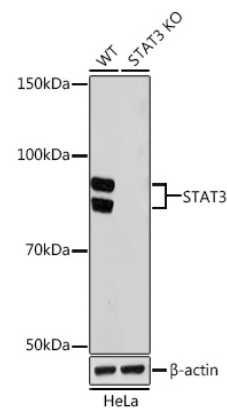
Affinity purification

#### Storage

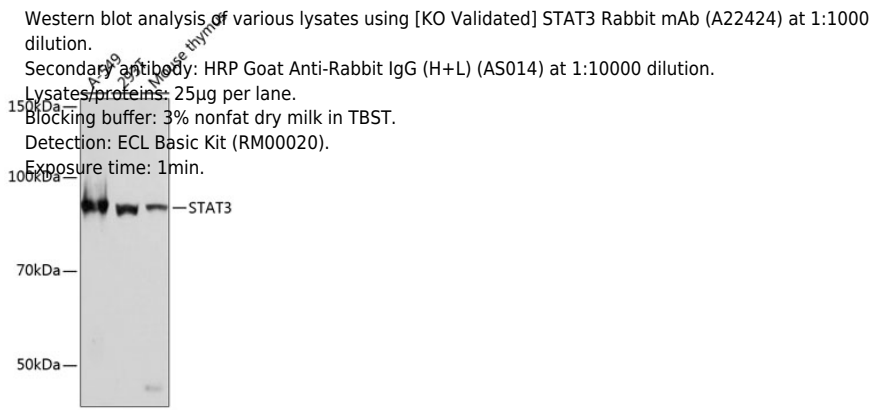
Store at -20°C. Avoid freeze / thaw cycles.

Buffer: PBS with 0.02% sodium azide,0.05% BSA,50% glycerol,pH7.3.

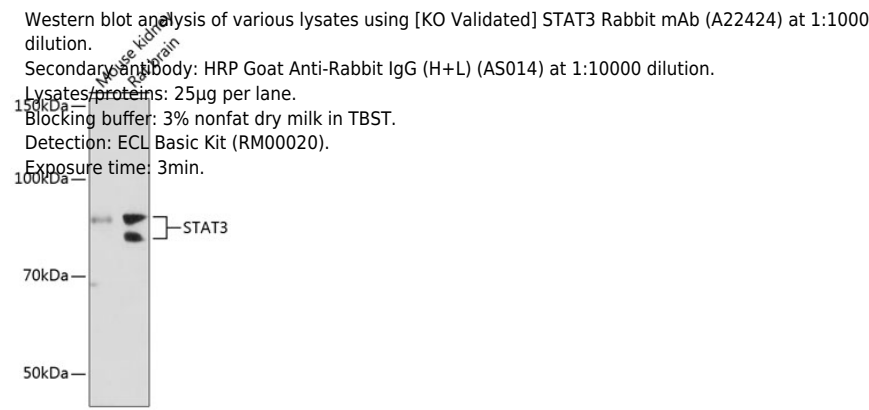
Validation Data



Western blot analysis of lysates from wild type (WT) and STAT3 knockout (KO) HeLa cells, using [KO Validated] STAT3 Rabbit mAb (A22424) at 1:1000 dilution.  
Secondary antibody: HRP Goat Anti-Rabbit IgG (H+L) (AS014) at 1:10000 dilution.  
Lysates/proteins: 25µg per lane.  
Blocking buffer: 3% nonfat dry milk in TBST.  
Detection: ECL Basic Kit (RM00020).  
Exposure time: 1min.

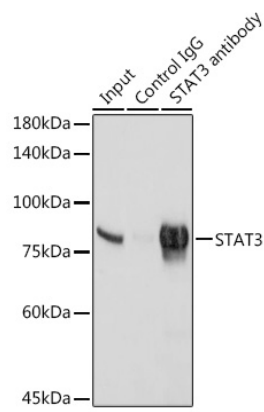


Western blot analysis of various lysates using [KO Validated] STAT3 Rabbit mAb (A22424) at 1:1000 dilution.  
Secondary antibody: HRP Goat Anti-Rabbit IgG (H+L) (AS014) at 1:10000 dilution.  
Lysates/proteins: 25µg per lane.  
Blocking buffer: 3% nonfat dry milk in TBST.  
Detection: ECL Basic Kit (RM00020).  
Exposure time: 1min.



Western blot analysis of various lysates using [KO Validated] STAT3 Rabbit mAb (A22424) at 1:1000 dilution.  
Secondary antibody: HRP Goat Anti-Rabbit IgG (H+L) (AS014) at 1:10000 dilution.  
Lysates/proteins: 25µg per lane.  
Blocking buffer: 3% nonfat dry milk in TBST.  
Detection: ECL Basic Kit (RM00020).  
Exposure time: 3min.

# Validation Data



Immunoprecipitation analysis of 300 µg extracts of HeLa cells using 3 µg STAT3 antibody (A22424). Western blot was performed from the immunoprecipitate using STAT3 antibody (A22424) at a dilution of 1:1000.