

A22209N

Leader in Biomolecular Solutions for Life Science



APC Rabbit anti-Human CD48 mAb, glycerol free

Catalog No.: A22209N

Basic Information

Observed MW

Calculated MW
28kDa

Category

SMab Recombinant Monoclonal Antibody

Applications

FC

Cross-Reactivity

Human

CloneNo number

ARC53039-APC

Conjugate

APC. Ex:650nm. Em:660nm.

Background

This gene encodes a member of the CD2 subfamily of immunoglobulin-like receptors which includes SLAM (signaling lymphocyte activation molecules) proteins. The encoded protein is found on the surface of lymphocytes and other immune cells, dendritic cells and endothelial cells, and participates in activation and differentiation pathways in these cells. The encoded protein does not have a transmembrane domain, however, but is held at the cell surface by a GPI anchor via a C-terminal domain which maybe cleaved to yield a soluble form of the receptor. Multiple transcript variants encoding different isoforms have been found for this gene.

Recommended Dilutions

FC 5 μ l per 10^6 cells in
100 μ l volume

Immunogen Information

Gene ID
962

Swiss Prot
P09326

Immunogen

Recombinant fusion protein containing a sequence corresponding to amino acids 27-220 of human CD48(NP_001769.2)

Synonyms

BCM1; BLAST; hCD48; mCD48; BLAST1; SLAMF2; MEM-102

Contact



www.abclonal.com

Product Information

Source
Rabbit

Isotype
IgG

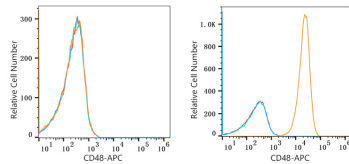
Purification
Affinity purification

Storage

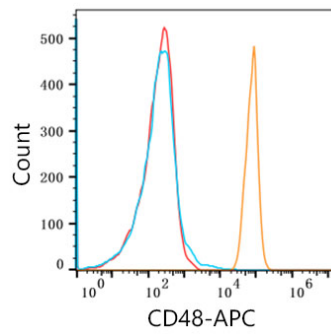
Store at 2-8°C. Avoid freeze.

Buffer: PBS with 0.03% proclin300,0.2% BSA,pH7.3.

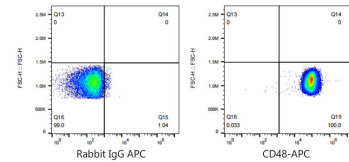
Validation Data



Flow cytometry: 1×10^6 K-562 cells (negative control, left) and U266 cells (right) were surface-stained with APC Rabbit anti-Human CD48 mAb (A22209N, 5 μ l/Test, orange line) or APC Rabbit IgG isotype control (5 μ l/Test, blue line). Non-fluorescently stained cells were used as blank control (red line).



Flow cytometry: 1×10^6 Human PBMC were surface-stained with APC Rabbit anti-Human CD48 mAb (A22209N, 5 μ l/Test, orange line) or APC Rabbit IgG isotype control (5 μ l/Test, blue line). Non-fluorescently stained Human PBMC was used as blank control (red line).



Flow cytometry: 1×10^6 Human PBMC cells were surface-stained with APC Rabbit IgG isotype control (5 μ l/Test, left) or APC Rabbit anti-Human CD48 mAb (A22209N, 5 μ l/Test, right).