

A22180

Leader in Biomolecular Solutions for Life Science



Non-phospho (Active) β -Catenin -S33/S37/T41 Rabbit mAb

Catalog No.: A22180

Recombinant

1 Publications

Basic Information

Observed MW

92kDa

Calculated MW

85kDa

Category

SMab Recombinant Monoclonal Antibody

Applications

WB, IHC-P, ELISA

Cross-Reactivity

Human, Mouse, Rat

CloneNo number

ARC53641

Background

The protein encoded by this gene is part of a complex of proteins that constitute adherens junctions (AJs). AJs are necessary for the creation and maintenance of epithelial cell layers by regulating cell growth and adhesion between cells. The encoded protein also anchors the actin cytoskeleton and may be responsible for transmitting the contact inhibition signal that causes cells to stop dividing once the epithelial sheet is complete. Finally, this protein binds to the product of the APC gene, which is mutated in adenomatous polyposis of the colon. Mutations in this gene are a cause of colorectal cancer (CRC), pilomatixoma (PTR), medulloblastoma (MDB), and ovarian cancer. Alternative splicing results in multiple transcript variants.

Recommended Dilutions

WB	1:2000 - 1:20000
IHC-P	1:50 - 1:200

Immunogen Information

Gene ID

1499

Swiss Prot

P35222

Immunogen

A synthetic peptide corresponding to a sequence within amino acids 1-100 of human Non-phospho (Active) β -Catenin -S33/S37/T41 (NP_001895.1).

Synonyms

EVR7; CTNNB; MRD19; NEDSDV; armadillo; Non-phospho (Active) β -Catenin -S33/S37/T41

Contact



www.abclonal.com

Product Information

Source

Rabbit

Isotype

IgG

Purification

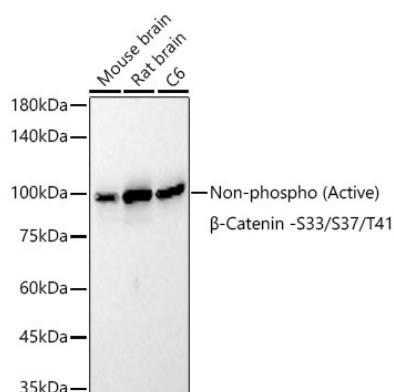
Affinity purification

Storage

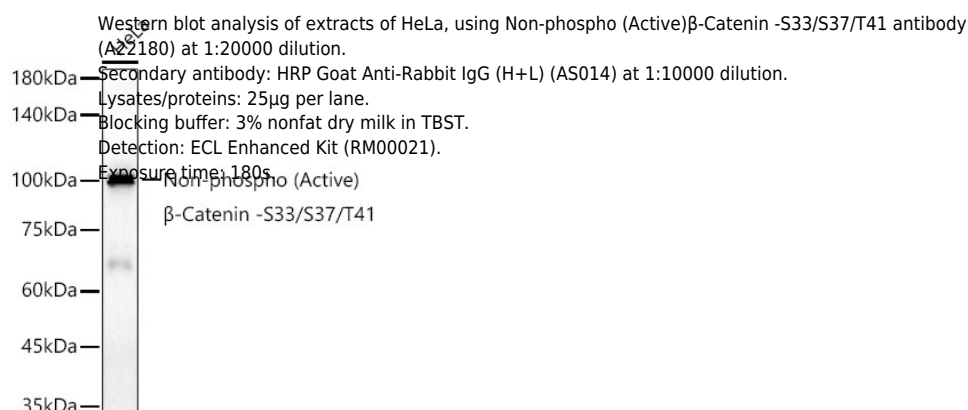
Store at -20°C. Avoid freeze / thaw cycles.

Buffer: PBS with 0.05% proclin300, 0.05% BSA, 50% glycerol, pH7.3.

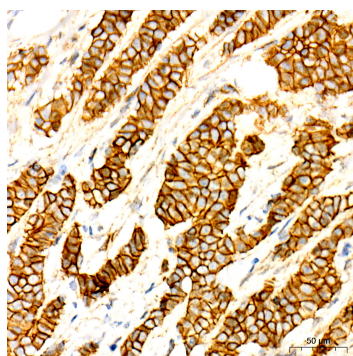
Validation Data



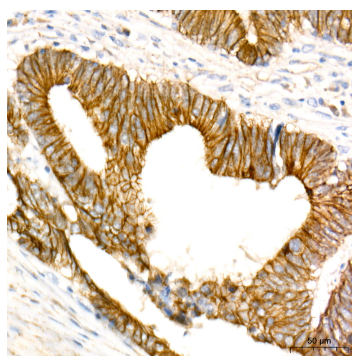
Western blot analysis of extracts of various lysates, using Non-phospho (Active) β -Catenin -S33/S37/T41 antibody (A22180) at 1:20000 dilution.
 Secondary antibody: HRP Goat Anti-Rabbit IgG (H+L) (AS014) at 1:10000 dilution.
 Lysates/proteins: 25 μ g per lane.
 Blocking buffer: 3% nonfat dry milk in TBST.
 Detection: ECL Basic Kit (RM00020).
 Exposure time: 180s.



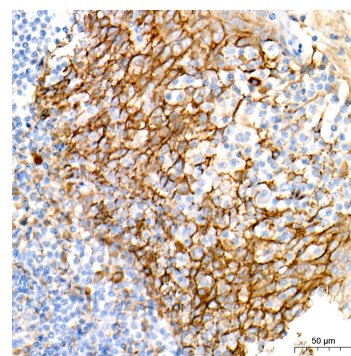
Western blot analysis of extracts of HeLa, using Non-phospho (Active) β -Catenin -S33/S37/T41 antibody (A22180) at 1:20000 dilution.
 Secondary antibody: HRP Goat Anti-Rabbit IgG (H+L) (AS014) at 1:10000 dilution.
 Lysates/proteins: 25 μ g per lane.
 Blocking buffer: 3% nonfat dry milk in TBST.
 Detection: ECL Enhanced Kit (RM00021).
 Exposure time: 180s.



Immunohistochemistry analysis of paraffin-embedded human breast cancer using Non-phospho (Active) β -Catenin -S33/S37/T41 Rabbit mAb (A22180) at dilution of 1:100 (40x lens). Perform high pressure antigen retrieval with 10 mM citrate buffer pH 6.0 before commencing with IHC staining protocol.



Immunohistochemistry analysis of paraffin-embedded human colon carcinoma using Non-phospho (Active) β -Catenin -S33/S37/T41 Rabbit mAb (A22180) at dilution of 1:100 (40x lens). Perform high pressure antigen retrieval with 10 mM citrate buffer pH 6.0 before commencing with IHC staining protocol.



Immunohistochemistry analysis of paraffin-embedded human tonsil using Non-phospho (Active) β -Catenin -S33/S37/T41 Rabbit mAb (A22180) at dilution of 1:100 (40x lens). Perform high pressure antigen retrieval with 10 mM citrate buffer pH 6.0 before commencing with IHC staining protocol.